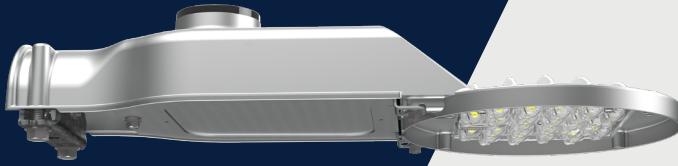


ERLM Cobra Head LED Roadway Luminaire



Project Name _____

Date _____ Type _____

Notes _____

The **Evolve**® LED Roadway ERLM Luminaire uses proprietary LED refractive optics optimized for local and secondary roadways. ERLM's lightweight compact design provides high lumen maintenance and easy installation. Available in Type II and Type III distributions at 3000K, 4000K and 5000K CCT.

CONSTRUCTION

Housing:	Aluminum diecast enclosure with integral heatsink for maximum heat transfer.
Lens:	Impact resistant acrylic refractor.
Paint:	Corrosion resistance Gray powder paint, ≥ 2.0 mil thickness. Optional = Coastal Finish.
Weight:	< 5.5 lbs (2.5 kgs)

OPTICAL SYSTEM

Lumens:	3980 – 9210
Distribution:	Type II Narrow Type II Narrow Medium Type III Medium
Efficacy:	141 - 154 LPW (4000K)
CCT:	3000K, 4000K & 5000K
CRI:	≥ 70

ELECTRICAL

Input Voltage:	120-277V
Input Frequency:	50/60Hz
Power Factor:	≥ 0.9 at rated watts
Total Harmonic Distortion:	$\leq 20\%$ at rated watts

SURGE PROTECTION*

Standard	Optional
6kV/3kA*	Secondary 10kV/5kA (R Option)* Secondary 10KV/10KA (S Option)

*Per ANSI C136.2-2018

LUMEN MAINTENANCE

Projected Lxx per IES TM-21-11 at 25°C

Lumens	Distribution	LXX(10K) @ Hours		
		25,000 HR	50,000 HR	60,000 HR
04 ,05, 06, 07, 08, 09	A1, B1, C1	L99	L99	L99

NOTES: Projected Lxx based on LM-80 ($\geq 12,000$ hour testing). Accepted industry tolerances apply to initial luminous flux and lumen maintenance measurements.

RATINGS

Operating Temperature:	-40°C to 50°C
Vibration:	3G per ANSI C136.31-2018
LM-79:	Tested in accordance with IES Standards
EMI:	Title 47 CFR Part 15 Class A
RoHS:	Complies with the material restrictions of RoHS

CONTROLS

Dimming:	0-10V
Sensors:	Photo Electric Sensors (PE) Available LightGrid+ Compatible

WARRANTY

5 Year (Standard)

10 Year (Optional)

ERLM

PROD. ID	VOLTAGE	LUMENS	DISTRIBUTION	CCT	CONTROLS PER ANSI C136.41	COLOR	OPTIONS
E = Evolve	0 = 120-277	04	A1 = Type II Narrow	30 = 3000K	A = 7-Pin Receptacle	GRAY = Gray	L = Tool Less Entry
R = Roadway		05	B1 = Type II Medium	40 = 4000K	D = 7-Pin Receptacle with Shorting Cap		R = Secondary 10kV/5kA SPD
L = Local		06	C1 = Type III Medium	50 = 5000K			S = Secondary 10kV/10kA SPD
M = Mini		07			Note: 0-10V control standard		Y = Coastal Finish*
		08					NOM = NOM
		09					XXX = Special Options

* Contact factory for availability

SUGGESTED HID REPLACEMENT

- Approximately 4,000 - 9,000 lumens to replace 50-100W HPS Cobra-head.

Note: Actual replacement lumens may vary based upon mounting height, pole spacing, design criteria, etc.

The information above is designed to provide a guideline to select the correct luminaire for a roadway application. The best and most accurate way to ensure the proper design is by doing a lighting layout.

CODE	DISTRIBUTION	INITIAL LUMENS		WATTAGE	BUG RATINGS	
		3000K	4000K/5000K	120-277	3000K	4000K/5000K
04	A1	3980	4150	27	B1-U0-G1	B1-U0-G1
	B1	3980	4150	27	B1-U0-G1	B1-U0-G1
	C1	3900	4000	27	B1-U0-G1	B1-U0-G1
05	A1	4800	5000	33	B1-U0-G1	B1-U0-G1
	B1	4800	5000	33	B1-U0-G1	B1-U0-G1
	C1	4800	5000	33	B1-U0-G1	B1-U0-G1
06	A1	5830	6000	40	B2-U0-G2	B2-U0-G2
	B1	5830	6000	40	B1-U0-G1	B1-U0-G1
	C1	5700	6000	40	B1-U0-G2	B1-U0-G1
07	A1	6700	7000	47	B2-U0-G2	B2-U0-G2
	B1	6700	7000	47	B2-U0-G2	B2-U0-G2
	C1	6700	7000	47	B2-U0-G2	B2-U0-G2
08	A1	7900	8230	56	B2-U0-G2	B2-U0-G2
	B1	7900	8230	56	B2-U0-G2	B2-U0-G2
	C1	7740	8000	56	B2-U0-G2	B2-U0-G2
09	A1	8840	9210	64	B2-U0-G2	B2-U0-G2
	B1	8840	9210	64	B2-U0-G2	B2-U0-G2
	C1	8650	9000	64	B2-U0-G2	B2-U0-G2

Preliminary ERLM IES files available upon request

ERLM Cobra Head

LED Roadway Luminaire

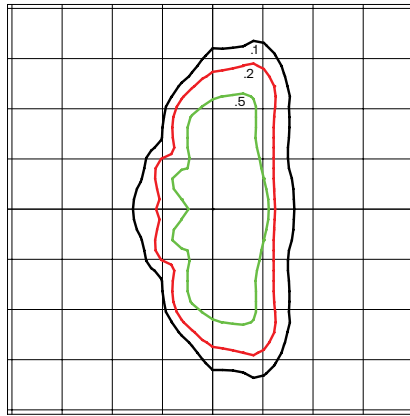
Photometric Plots

Project Name _____

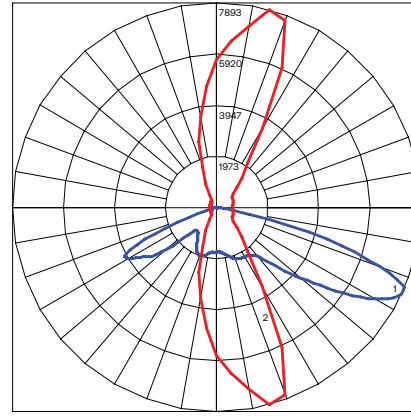
Date _____ Type _____

Notes _____

ERLM
Type II Narrow
 5,000 Lumens
 4000K
 ERLM_05A140__IES

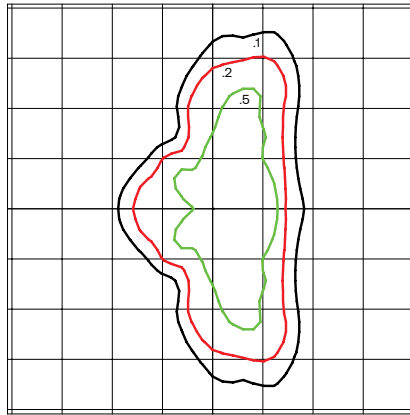


Grid Distance in Units
 of Mounting Height at 30'
 Initial Footcandle Values at Grade

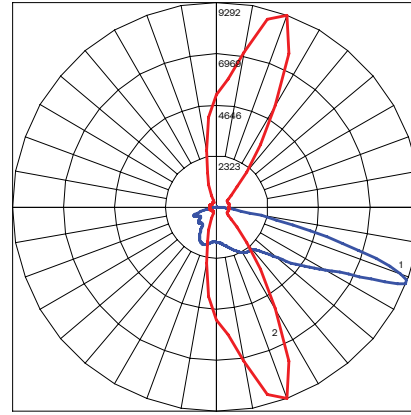


— Vertical plane at Max CD horizontal angle
 — Horizontal cone at Max CD vertical angle

ERLM
Type II Medium
 5,000 Lumens
 4000K
 ERLM_05B140__IES

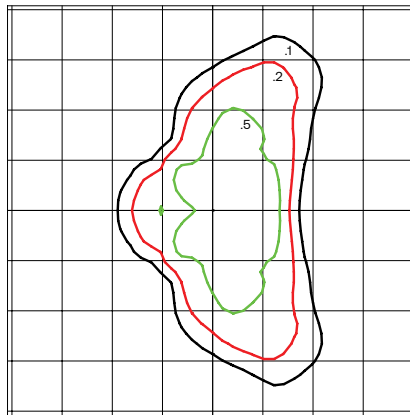


Grid Distance in Units
 of Mounting Height at 30'
 Initial Footcandle Values at Grade

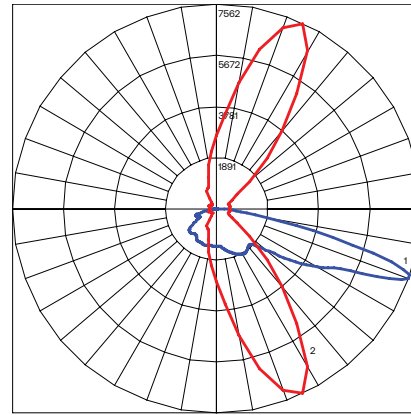


— Vertical plane at Max CD horizontal angle
 — Horizontal cone at Max CD vertical angle

ERLM
Type III Medium
 5,000 Lumens
 4000K
 ERLM_05C140__IES



Grid Distance in Units
 of Mounting Height at 30'
 Initial Footcandle Values at Grade



— Vertical plane at Max CD horizontal angle
 — Horizontal cone at Max CD vertical angle

ERLM Cobra Head

LED Roadway Luminaire

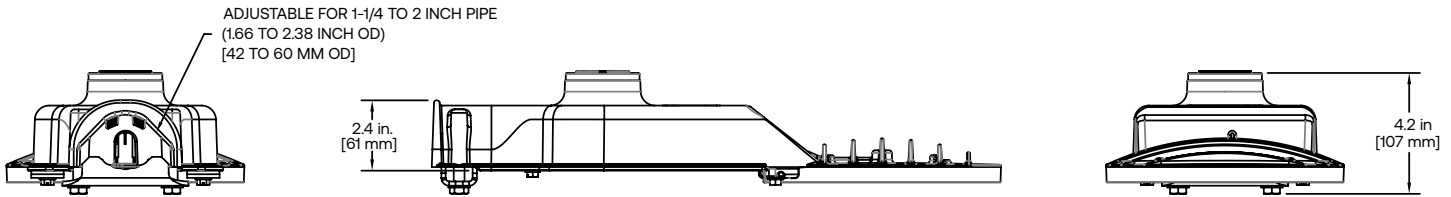
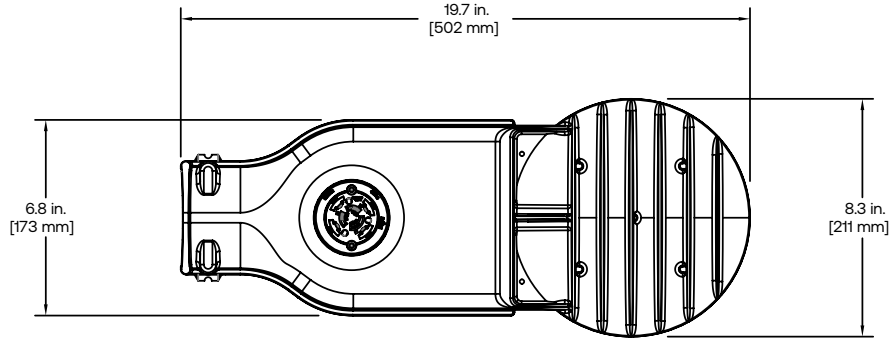
Dimensions

Project Name _____

Date _____ Type _____

Notes _____

ERLM



MOUNTING

- Adjustable for 1.25 to 2 in. nominal mounting pipe
- Integral diecast mounting pipe stop
- Slipfitter with +/- 5 degrees of leveling adjustment

EFFECTIVE PROJECTED AREA

- Effective Projected Area: 0.15 ft² (0.014 m²) (Max no shield)

WEIGHT

- Approximate net weight: <5.5 lbs (2.5 kgs)

ACCESSORIES

SAP Number	Part Number	Description
93310516	ELS-ERLM-120-020-GRAY	ERLM Shield 120° Rectangular, 2", Gray
93310517	ELS-ERLM-120-020-BLCK	ERLM Shield 120° Rectangular, 2", Black
93029237	PED-MV-LED-7	ANSI C136.41 Dimming PE, 120-277V
28299	PECOTL	Standard 120-277V
73251	SCCL-PECTL	Shorting Cap

NETWORKED LIGHTING CONTROL



Current's **LightGrid+**™ Outdoor Lighting Control System is designed for Street and Roadway Applications. It enables remote monitoring, control, and asset management of a single fixture or a group of fixtures through a web enabled Central Management System.