

SLING Micro Strike

AREA/SITE/ROAD LIGHTER

DATE:	LOCATION:
TYPE:	PROJECT:
CATALOG #:	

FEATURES

- Compact sleek design with multiple LED configurations and simple installation
- The SLING includes a square mounting block for easy pole installation or mast arm option for 2-3/8 ft OD roadway brackets
- Capable of replacing up to 1000w HID luminaires
- Micro Strike optical distributions of Type 2, 3, 4F, 4W or 5GW
- Tool-less entry option for easy installation and maintenance
- 1.5G rated for high vibration applications including bridges and overpasses



CONTROL TECHNOLOGY



SERVICE PROGRAMS



SPECIFICATIONS

CONSTRUCTION

- Die-cast housing with hidden vertical heat fins that are optimal for heat dissipation while keeping a clean smooth outer surface
- Corrosion resistant, die-cast aluminum housing with powder coat paint finish
- Separate optical and electrical compartment for improved thermal management and optimum component operation
- TGIC thermoset polyester powder paint finish applied at nominal 2.5 mil thickness

OPTICS

- Entire optical aperture illuminates to create a larger luminous surface area resulting in a low glare appearance without sacrificing optical performance
- Premium engineered individual acrylic lenses deliver IES Type 2, 3, 4F, 4W and 5GW distributions
- Lens distributions are field rotatable (in 90° increments) or exchangeable for job site fine-tuning
- 3000K, 4000K or 5000K (70 CRI) CCT
- 80, 160 or 320 midpower LEDs
- 3000K, 4000K or 5000K (70 CRI) CCT
- Zero uplight at 0 degrees of tilt
- Field rotatable optics

INSTALLATION

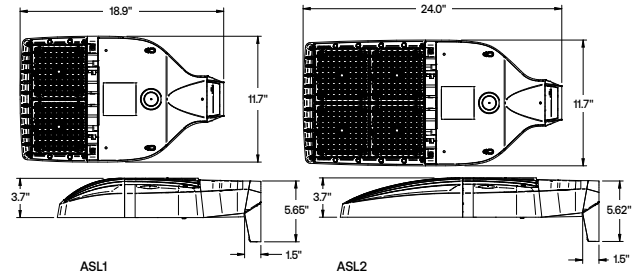
- Tool-less entry to wiring/driver compartment optional
- Arm mounting works with S2 drill pattern
- Fixture ships with square mounting block for ease of installation
- Mast arm fitter accessory or option available for 2-3/8" OD brackets with vertical tilt of +3°, 0° or -3°

ELECTRICAL

- Universal 120-277 VAC or 347-480 VAC input voltage, 50/60 Hz
- Ambient operating temperature -40° C to 40° C
- Drivers have greater than 90% power factor and less than 20% THD
- LED drivers have output power over-voltage, over-current protection and short circuit protection with auto recovery
- Standard 6kV surge protection with optional field replaceable surge protection device provides 20KA and 10KV protection meeting ANSI/IEEE C62.41.2 Category C High and Surge Location Category C3; Automatically takes fixture off-line for protection when device is consumed

CONTROLS

- Photo control, occupancy sensor and Zigbee wireless available for complete on/off and dimming control
- 7-pin ANSI C136.41-2013 photocontrol receptacle option available for twist lock photocontrols or wireless control modules (control accessories sold separately)
- Dimming Drivers are standard and dimming leads are extended out of the luminaire unless control options require connection to the dimming leads. Must specify if wiring leads are to be greater than the 6
- Please consult brand or sales representative when combining control and electrical options as some combinations may not operate as anticipated depending on your application



	Weight lbs. (kg)	EPA
ASL1	14.47 (6.56)	.46ft ² 0.43m ²
ASL2	17.47 (7.92)	.56ft ² 0.52m ²

CERTIFICATIONS

- Listed to UL1598 and CSA C22.2#2500-24 for wet locations and 40°C ambient temperatures
- DLC® (DesignLights Consortium Qualified), with some Premium Qualified configurations. Not all product variations on this page are DLC Qualified. Refer to <http://www.designlights.org/> for the most up-to-date list.
- 1.5G rated for ANSI C136.31 high vibration applications
- IP65 optical assembly
- Meets IDA recommendations using 3K CCT configuration at 0 degrees of tilt
- This product meets federal procurement law requirements under the Buy American Act (FAR 52.225-9) and Trade Agreements Act (FAR 52.225-11). See Buy America(n) Solutions (link to <https://www.currentlighting.com/resources/america-solutions>)

WARRANTY

- 5 Year warranty

SLING Micro Strike

AREA/SITE/ROAD LIGHTER

DATE: _____ LOCATION: _____
 TYPE: _____ PROJECT: _____
 CATALOG #: _____

Gray Shading = Service Program Limit of 15 luminaires **QS10**

ORDERING GUIDE

Example: ASL1-80L-50-3K7-2-UNV-ASQU-BLT-7PRMD-40F

CATALOG #

ORDERING INFORMATION

Series	# LEDs	CCT/CRI	Distribution	Voltage	Mounting
ASL1 ASL Microstrike Series	80L-25	3,000 lm	2 Type II	UNV Universal 120-277V	A Arm for Square poles with S2 drill pattern
	80L-39	4,500 lm	3 Type III	120 120V	A3 Square Arm with 3.25"-3.75" OD RPA3 Adapter
	80L-50	6,000 lm	4F Type 4F	208 208V	A4 Square Arm with 3.875"-4.5" OD RPA4 Adapter
	160L-70	9,000 lm	4W Type 4W	240 240V	A5 Square Arm with 5" OD RPA5 Adapter
	160L-100	12,000 lm	5QW Type 5QW	277 277V	MAF Mast Arm Fitter for 2-3/8" OD
	160L-115	15,000 lm		347 347V	
	160L-135	18,000 lm		480 480V	
ASL2 ASL Microstrike Series	320L-145	21,000 lm			
	320L-170	24,000 lm			
	320L-185	27,000 lm			
	320L-210	30,000 lm			
	320L-235	33,000 lm			
	320L-255	35,000 lm			

Network Control Options	Options	Color
NXWS16F NX Networked Wireless Enabled Integral NX SMP2-LMO PIR Occupancy Sensor with Automatic Dimming Photocell and Bluetooth Programming ^{1,3,4}	F¹ Fusing	BLT Black Matte Textured
NXWS40F NX Networked Wireless Enabled Integral NX SMP2-HMO PIR Occupancy Sensor with Automatic Dimming Photocell and Bluetooth Programming ^{1,3,4}	BC Backlight Control	BLS Black Gloss Smooth
NXW NX Networked Wireless Radio Module NXRM2 and Bluetooth Programming, without Sensor ^{3,4}	SP 20kA & 10kV Surge Protector	DBT Dark Bronze Matte Textured
WIR LightGRID+ In-Fixture Module ^{3,4}		DBS Dark Bronze Gloss Smooth
WIRSC LightGRID+ Module and Occupancy Sensor ^{3,4}		GTT Graphite Matte Textured
Stand Alone Sensors		LGS Light Grey Gloss Smooth
7PR 7 Pin Receptacle		LGT Light Grey Matte Textured
7PR-SC 7 Pin Receptacle with shunting cap		PSS Platinum Silver Smooth
7PR-MD8F 7 pin receptacle with low voltage sensor at 8' mounting for external control accessory		WHT White Matte Textured
7PR-MD40F 7 pin receptacle with low voltage sensor at 40' mounting for external control accessory		WHS White Gloss Smooth
7PR-TL 7 Pin Receptacle with Photocontrol		VGT Verde Green Textured
Sensors		Color Option
BTS_F Bluetooth Programmable, PIR Occupancy/Daylight Sensor, 360° lens ²		CC Custom Color
BTSO_F Bluetooth Programmable, PIR Occupancy/Daylight Sensor, 360° lens, up to 12' mounting height ³		

Notes:

- 1 Must specify Voltage
- 2 Replace "_" with "14" for up to 14' mounting height, "40F" for 15-40' mounting height
- 3 Replace "_" with "12" for up to 12' mounting height






SLING Micro Strike

AREA/SITE/ROAD LIGHTER

OUTDOOR LIGHTING CONTROLS OPTIONS

CONTROLS FUNCTIONALITY



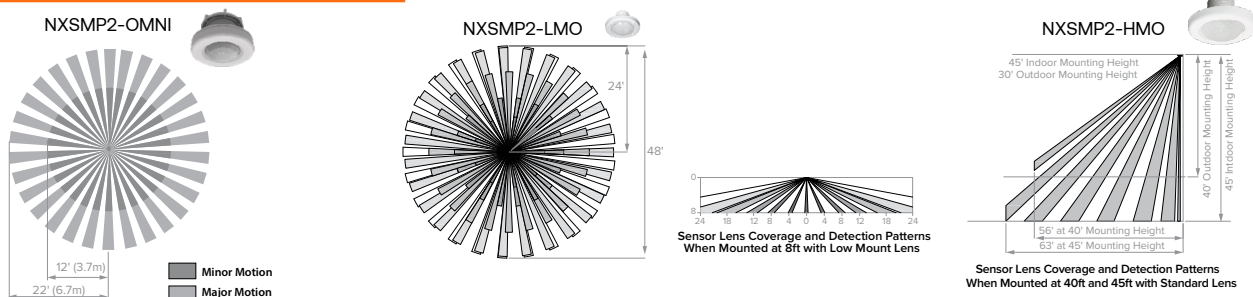
	Control Option Ordering Logic & Description	Control Option Functionality									Control Option Components	
		Networkable	Grouping	Scheduling	Occupancy/Motion	Daylight Harvesting	0-10V Dimming	On/Off Control	Bluetooth App Programming	Sensor Height		
NX Wireless	NXW	✓	✓	✓	-	-	✓	✓	✓	-		NXRM2-H
	NXWS12F	✓	✓	✓	✓	✓	✓	✓	✓	12ft		NXSMP2-OMNI-O
	NXWS16F	✓	✓	✓	✓	✓	✓	✓	✓	16ft		NXSMP2-LMO
	NXWS40F	✓	✓	✓	✓	✓	✓	✓	✓	40ft		NXSMP2-HMO
LightGRID+	WIR	✓	-	✓	-	-	✓	✓	Gateway	-		
	WIRSC	✓	✓	✓	✓	✓	✓	✓	Gateway	14ft - 40ft		BTMSP
Independent	BTSO-12F	-	-	-	✓	✓	✓	✓	✓	12ft		BTSMP-OMNI-O
	BTS-14F	-	-	-	✓	✓	✓	✓	✓	14ft		BTSMP-LMO
	BTS-40F	-	-	-	✓	✓	✓	✓	✓	40ft		BTSMP-HMO

DEFAULT SETTINGS

NX Wireless	Occupancy Sensor	Enabled
	Occupancy Sensor Sensitivity	7
	Occupancy Sensor Timeout	15 Minutes
	Occupied Dim Level	100%
	Unoccupied Dim Level	0%
	Daylight Sensor	Disabled
	Bluetooth	Enabled
	2.4GHz Wireless Mesh	On
	"Passcode Factory Passcode: HubbN3T!"	Enabled

Stand Alone	Occupancy Sensor	Enabled
	Occupancy Sensor Sensitivity	7
	Occupancy Sensor Timeout	8 Minutes
	Occupied Dim Level	100%
	Unoccupied Dim Level	50%
	Daylight Sensor	Disabled

NX WIRELESS COVERAGE PATTERNS



NX LIGHTING CONTROLS FREE APP

CONTROLS TECH SUPPORT 800-888-8006 (7:00 AM - 7:00 PM)



The NX Lighting Controls App is free to use mobile application for programming both NX Lighting Controls System or Standalone Bluetooth Sensors. The mobile app allows you to configure devices, discover and setup wireless enable luminaires and program NX system settings.

Apple App: <https://apps.apple.com/us/app/nx-lighting-controls/id962112904>

Google Play: https://play.google.com/store/apps/details?id=io.cordova.NXSTR&hl=en_US&q=US



Apple App






Google Play

SLING Micro Strike

AREA/SITE/ROAD LIGHTER

OUTDOOR LIGHTING CONTROLS OPTIONS

CONTROLS FUNCTIONALITY

	Control Option Ordering Logic & Description		Control Option Functionality									Control Option Components	
			Networkable	Grouping	Scheduling	Occupancy/Motion	Daylight Harvesting	0-10V Dimming	On/Off Control	Bluetooth App Programming	Sensor Height		
Independent	7PR	7-Pin Receptacle	-	-	Paired with external control	-	Paired with external control	-	Paired with external control	-	-	 7PR	
	7PR-SC	7-Pin Receptacle with shorting cap	-	-	-	-	-	-	-	-	-	 7PR-SC	
	7PR-TL	7-Pin with photocontrol	-	-	-	-	✓	-	✓	-	-	 7PR-TL	

SLING Micro Strike

AREA/SITE/ROAD LIGHTER

DATE:	LOCATION:
TYPE:	PROJECT:
CATALOG #:	

ACCESSORIES (ORDERED SEPARATELY)

Catalog Number	Description
<input type="checkbox"/> ASL1-HSS-90-B-XXX ¹	House Side Shield Back 90 deg
<input type="checkbox"/> ASL1-HSS-90-F-XXX ¹	House Side Shield Front 90 deg
<input type="checkbox"/> ASL1-HSS-90-S-XXX ¹	House Side Shield Side 90 deg
<input type="checkbox"/> ASL1-HSS-270-BSS-XXX ¹	House Side Shield Back, Side & Side 270 deg
<input type="checkbox"/> ASL1-HSS-270-FSS-XXX ¹	House Side Shield Front, Side & Side 270 deg
<input type="checkbox"/> ASL1-HSS-270-FSB-XXX ¹	House Side Shield Front, Side & Back 270 deg
<input type="checkbox"/> ASL1-HSS-360-XXX ¹	House Side Shield 360 deg
<input type="checkbox"/> ASL2-HSS-90-B-XXX ¹	House Side Shield Back 90 deg
<input type="checkbox"/> ASL2-HSS-90-F-XXX ¹	House Side Shield Front 90 deg
<input type="checkbox"/> ASL2-HSS-90-S-XXX ¹	House Side Shield Side 90 deg
<input type="checkbox"/> ASL2-HSS-270-BSS-XXX ¹	House Side Shield Back, Side & Side 270 deg
<input type="checkbox"/> ASL2-HSS-270-FSS-XXX ¹	House Side Shield Front, Side & Side 270 deg
<input type="checkbox"/> ASL2-HSS-270-FSB-XXX ¹	House Side Shield Front, Side & Back 270 deg
<input type="checkbox"/> ASL2-HSS-360-XXX ¹	House Side Shield 360 deg
<input type="checkbox"/> ASL-MAF	Mast arm kit with wildlife shield for mounting on 2 3/8" OD arms
<input type="checkbox"/> SETA2-XX ¹	Square pole tenon adapter (4 at 90 degrees) (2 3/8" OD tenon)
<input type="checkbox"/> RETA2-XX ¹	Round pole tenon adapter (4 at 90 degrees) (2 3/8" OD tenon), requires CLIS-RPA4-ACC-XX for each luminaire
<input type="checkbox"/> RARBC80L	Backlight Control 80L
<input type="checkbox"/> RARBC160L	Backlight Control 160L
<input type="checkbox"/> RARBC320L	Backlight Control 320L
<input type="checkbox"/> RARBC480L	Backlight Control 480L
<input type="checkbox"/> CLIS-RPA*-ACC-CC ¹	Round Pole Adapter (*denotes pole diameter 3=3.25"-3.75", 4=3.875"-4.5", 5=5" and paint color replaces CC
<input type="checkbox"/> ASL-ARMMTG-XX ¹	Arm mounting kit for side of pole attachment
<input type="checkbox"/> WB-AREA-XX ¹	Wall bracket, Compatible with standard arm mount option
<input type="checkbox"/> ASL-MAF	Mast arm kit with wildlife shield for mounting on 2 3/8" OD arms

¹ Replace XX or XXX with color choice, eg: DB for Dark Bronze or BLT for Black Matte Textured

SLING Micro Strike

AREA/SITE/ROAD LIGHTER

DATE:	LOCATION:
TYPE:	PROJECT:
CATALOG #:	

PERFORMANCE DATA

Description	Nominal Wattage	System Watts	Dist. Type	5K (5000K NOMINAL 70 CRI)					4K (4000K NOMINAL 70 CRI)					3K (3000K NOMINAL 70 CRI)				
				Lumens	LPW ¹	B	U	G	Lumens	LPW ¹	B	U	G	Lumens	LPW ¹	B	U	G
ASL1	25	25.4	2	3430	135	2	0	2	3413	134	2	0	2	3225	127	2	0	2
			3	3465	136	2	0	2	3448	136	2	0	2	3259	128	2	0	2
			4F	3204	126	1	0	1	3201	126	1	0	1	3127	123	1	0	1
			4W	3401	134	2	0	3	3384	133	2	0	3	3198	126	2	0	3
			5QW	3483	137	4	0	2	3466	136	4	0	2	3274	129	4	0	2
	39	38.0	4F	5005	132	1	0	1	5000	132	1	0	1	4885	129	1	0	1
			2	5232	138	3	0	3	5206	137	3	0	3	4919	129	3	0	3
			3	5287	139	2	0	2	5260	138	2	0	2	4971	131	2	0	2
			4W	5188	137	2	0	3	5163	136	2	0	3	4879	128	2	0	3
	50	49.7	2	6295	127	2	0	2	6263	126	2	0	2	5918	119	2	0	2
			3	6361	128	2	0	2	6329	127	2	0	2	5981	120	2	0	2
			4F	6407	129	1	0	2	6401	129	1	0	2	6254	126	1	0	2
			4W	6243	126	2	0	3	6212	125	2	0	3	5870	118	2	0	3
			5QW	6392	129	4	0	2	6360	128	4	0	2	6009	121	4	0	2
	70	68.4	2	9460	138	3	0	3	9413	138	3	0	3	8895	130	3	0	3
			3	9559	140	2	0	2	9512	139	2	0	2	8989	131	2	0	2
			4F	8988	131	2	0	2	8979	131	2	0	2	8772	128	2	0	2
			4W	9382	137	2	0	3	9335	136	2	0	3	8822	129	2	0	3
			5QW	9610	140	4	0	2	9562	140	4	0	2	9034	132	4	0	2
	100	88.0	2	11939	136	2	0	2	11885	135	2	0	2	11232	128	2	0	2
			3	12064	138	2	0	2	12010	136	2	0	2	11349	129	2	0	2
			4F	12832	146	2	0	2	12819	146	2	0	2	12524	142	2	0	2
			4W	11840	135	2	0	3	11787	135	2	0	3	11138	127	2	0	3
			5QW	12132	138	4	0	2	12071	138	4	0	2	11404	130	4	0	2
	115	109.7	2	15651	143	2	0	2	15577	142	2	0	2	14977	137	2	0	2
			3	15487	141	2	0	2	15413	140	2	0	2	14820	135	2	0	2
			4F	14754	134	2	0	2	14740	134	2	0	2	14401	131	2	0	2
			4W	15305	140	2	0	3	15232	139	2	0	3	14646	134	2	0	3
			5QW	15731	143	4	0	2	15632	143	4	0	2	15031	137	4	0	2
	135	133.3	2	18089	136	3	0	3	17999	135	3	0	3	17275	130	3	0	3
3			17863	134	2	0	2	17777	133	2	0	2	17094	128	2	0	2	
4F			17317	130	3	0	3	17300	130	3	0	3	16902	127	2	0	3	
4W			17653	133	2	0	3	17568	132	2	0	3	16893	127	2	0	3	
5QW			18155	136	4	0	2	18030	135	4	0	2	17338	130	4	0	2	

ASL2 Performance Data on next page

¹ VAC input Lumen values are from photometric test performed in accordance with IESNA LM-79-08. Data is considered to be representative of the configurations. Actual performance may differ as a result of end-user environment and application.

SLING Micro Strike

AREA/SITE/ROAD LIGHTER

DATE:	LOCATION:
TYPE:	PROJECT:
CATALOG #:	

PERFORMANCE DATA

Description	Nominal Wattage	System Watts	Dist. Type	5K (5000K NOMINAL 70 CRI)					4K (4000K NOMINAL 70 CRI)					3K (3000K NOMINAL 70 CRI)				
				Lumens	LPW ¹	B	U	G	Lumens	LPW ¹	B	U	G	Lumens	LPW ¹	B	U	G
ASL2	145	143.0	2	21007	147	3	0	4	20902	146	3	0	4	20061	140	3	0	4
			3	20842	146	3	0	4	20738	145	3	0	4	19904	139	3	0	4
			4F	19490	136	3	0	3	19471	136	3	0	3	19023	133	3	0	3
			4W	20595	144	3	0	5	20492	143	3	0	5	19669	138	3	0	5
			5QW	21130	148	5	0	4	21024	147	5	0	4	20179	141	5	0	4
	170	168.0	2	24452	146	3	0	4	24330	145	3	0	4	23351	139	3	0	4
			3	24260	144	3	0	4	24139	144	3	0	4	23168	138	3	0	4
			4F	22847	136	3	0	4	22824	136	3	0	4	22299	133	3	0	3
			4W	23972	143	3	0	5	23853	142	3	0	5	22895	136	3	0	5
			5QW	24596	146	5	0	4	24472	146	5	0	4	23488	140	5	0	4
	185	185.0	2	26658	144	4	0	5	26525	143	4	0	5	25457	138	4	0	5
			3	26449	143	3	0	4	26316	142	3	0	4	25258	137	3	0	4
			4F	24834	134	3	0	4	24809	134	3	0	4	24238	131	3	0	3
			4W	26135	141	4	0	5	26005	141	4	0	5	24961	135	4	0	5
			5QW	26814	145	5	0	5	26680	144	5	0	5	25607	138	5	0	5
	210	210.0	2	29872	142	3	0	4	29723	142	3	0	4	28536	136	3	0	4
			3	29638	141	3	0	4	29489	140	3	0	4	28303	135	3	0	4
			4F	30623	146	3	0	4	30592	146	3	0	4	20889	142	3	0	4
			4W	29286	139	3	0	5	29140	139	3	0	5	27970	133	3	0	5
			5QW	30047	143	5	0	4	29896	142	5	0	4	28694	137	5	0	4
	235	235.0	2	32960	140	3	0	4	32796	140	3	0	4	31475	134	3	0	4
			3	32701	139	3	0	4	32537	138	3	0	4	31229	133	3	0	4
			4F	31582	134	3	0	4	31550	134	3	0	4	30825	131	3	0	4
			4W	32313	138	3	0	5	32152	137	3	0	5	30861	131	3	0	5
			5QW	33153	141	5	0	4	32987	140	5	0	4	31660	135	5	0	4
255	261.2	2	36216	142	4	0	5	36035	141	4	0	5	34585	136	4	0	5	
		3	35932	141	3	0	4	35752	140	3	0	4	34314	135	3	0	4	
		4F	34254	131	3	0	4	34219	131	3	0	4	33432	128	3	0	4	
		4W	35505	139	4	0	5	35329	139	4	0	5	33910	133	4	0	5	
		5QW	36428	143	5	0	5	36246	142	5	0	5	34788	136	5	0	5	

¹ VAC input Lumen values are from photometric test performed in accordance with IESNA LM-79-08. Data is considered to be representative of the configurations. Actual performance may differ as a result of end-user environment and application.

SLING Micro Strike

AREA/SITE/ROAD LIGHTER

ELECTRICAL DATA

Family	Nominal Wattage	Input Voltage (Volts)	Current (AMPS)	System Power (Watts)
SLING (ASL1)	25	120	0.21	25.4
		208	0.12	
		240	0.11	
		277	0.09	
		347	0.07	
		480	0.05	
	39	120	0.32	38
		208	0.18	
		240	0.16	
		277	0.14	
		347	0.11	
		480	0.08	
	50	120	0.41	49.7
		208	0.24	
		240	0.21	
		277	0.18	
		347	0.14	
		480	0.10	
	70	120	0.57	68.4
		208	0.33	
		240	0.29	
		277	0.25	
		347	0.20	
		480	0.14	
	100	120	0.73	88
		208	0.42	
		240	0.37	
		277	0.32	
		347	0.25	
		480	0.18	
115	120	0.91	109.7	
	208	0.53		
	240	0.46		
	277	0.40		
	347	0.32		
	480	0.23		
135	120	1.11	133.3	
	208	0.64		
	240	0.56		
	277	0.48		
	347	0.38		
	480	0.28		

SLING (ASL2) Next Page

SLING Micro Strike

AREA/SITE/ROAD LIGHTER

ELECTRICAL DATA (CONT'D)

Family	Nominal Wattage	Input Voltage (Volts)	Current (AMPS)	System Power (Watts)
SLING (ASL2)	145	120	1.19	143.0
		208	0.69	
		240	0.60	
		277	0.52	
		347	0.41	
		480	0.30	
	170	120	1.40	168.0
		208	0.81	
		240	0.70	
		277	0.61	
		347	0.48	
		480	0.35	
	185	120	1.54	185.0
		208	0.89	
		240	0.77	
		277	0.67	
		347	0.53	
		480	0.39	
	210	120	1.75	210.0
		208	1.01	
		240	0.88	
		277	0.76	
		347	0.61	
		480	0.44	
	235	120	1.96	235.0
		208	1.13	
		240	0.98	
		277	0.85	
		347	0.68	
		480	0.49	
255	120	2.18	261.2	
	208	1.26		
	240	1.09		
	277	0.94		
	347	0.75		
	480	0.54		

SLING Micro Strike

AREA/SITE/ROAD LIGHTER

PROJECTED LUMEN MAINTENANCE

Ambient Temperature	OPERATING HOURS					
	0	25,000	TM-21-11' L96 60,000	50,000	100,000	L70 (Hours)
25°C / 77°F	1.00	0.97	0.96	0.95	0.91	408,000
40°C / 104°F	0.99	0.96	0.95	0.94	0.89	356,000

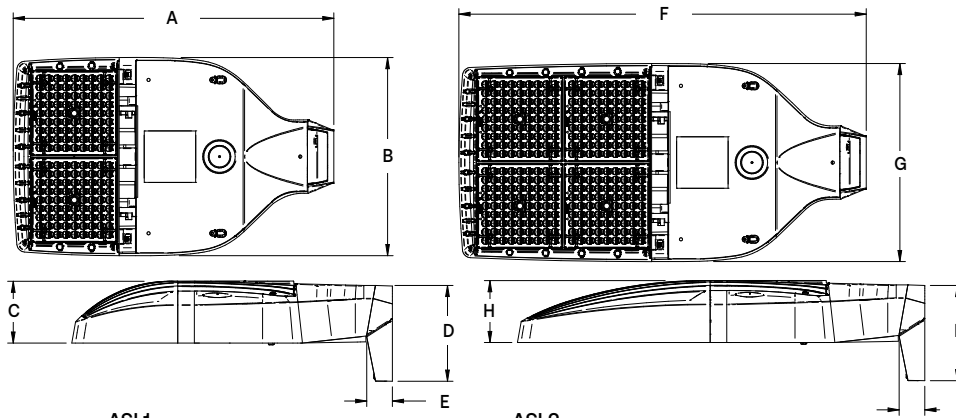
1. Projected per IESNA TM-21-11 (* Cree XP-L, 2100mA, 105°C Ts, 6,000hrs)

LUMINAIRE AMBIENT TEMPERATURE FACTOR (LATF)

Ambient Temperature		Lumen Multiplier
0° C	32° F	1.06
10° C	50° F	1.03
20° C	68° F	1.01
25° C	77° F	1.00
30° C	86° F	0.99
40° C	104° F	0.97

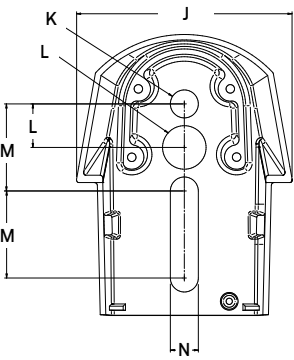
Use these factors to determine relative lumen output for average ambient temperatures from 0-40°C (32-104°F).

DIMENSIONS



Weight	
ASL1	14.47 lbs (6.56 kgs)
ASL2	17.47 lbs (7.92 kgs)

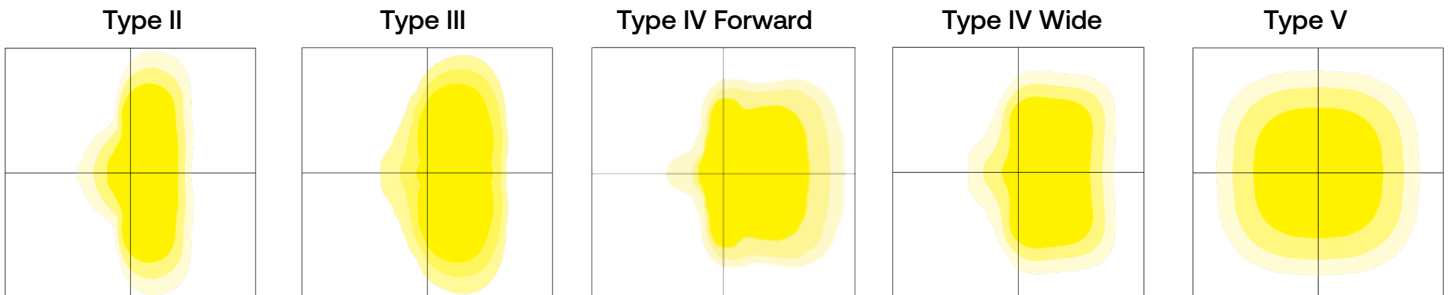
										Weight			
										ASL1	ASL2	ASL1 w/ HSS	ASL2 w/ HSS
A	B	C	D	E	F	G	H	I	ASL1 EPA@0°	ASL2 EPA@0°	ASL1 w/ HSS	ASL2 w/ HSS	
18.9"	11.7"	3.7"	5.65"	1.5"	24.0"	11.7"	3.7"	5.62"	.46 ft. ²	.56 ft. ²	.73 ft. ²	1.01 ft. ²	
480mm	297mm	94mm	144mm	38mm	610mm	297mm	94mm	143mm	.043 m ²	.052 m ²	.068 m ²	.094 m ²	



J	K	L	M	N
4.33"	.562"	.875"	1.75"	.562"
480mm	297mm	94mm	610mm	297mm

PHOTOMETRY

The following diagrams represent the general distribution options offered for this product. For detailed information on specific product configurations, see [website photometric test reports](#).



SLING Micro Strike

AREA/SITE/ROAD LIGHTER

ADDITIONAL INFORMATION (CONT'D)

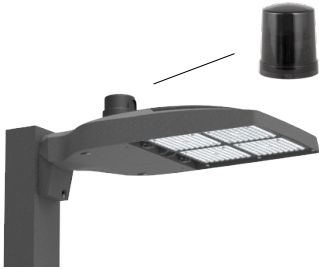
OCCUPANCY SENSOR

- Individual fixture control
- Dims product when space is not occupied

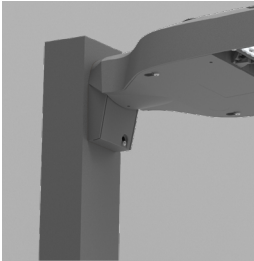


7-PIN RECEPTACLE

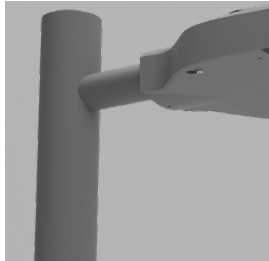
- Compatible with 3-pin, 5-pin or 7-pin photocontrols
- Turns fixture on when sun sets, off when sun rises
- For use with a variety of control platforms



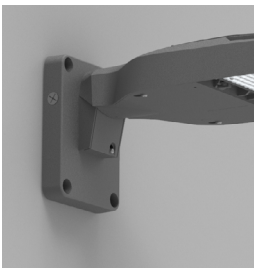
MOUNTING



Arm Mount – Fixture ships with integral arm for ease of installation. Compatible with Outdoor S2 drill pattern.

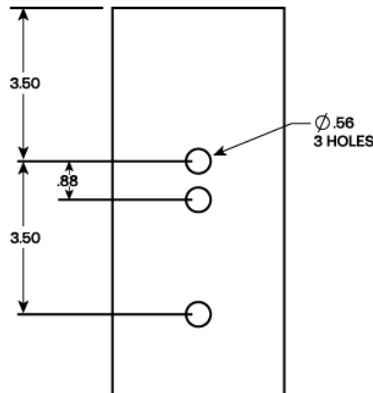


MAF – Fits 2-3/8" OD arms Roadway applications.



Wall Mount – Wall mount bracket designed for building mount applications.

DRILL PATTERN S2

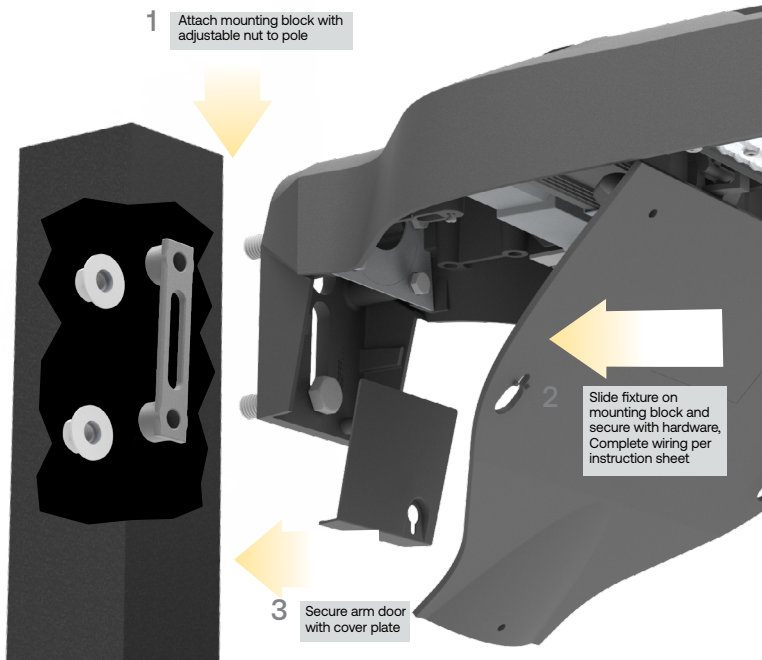


SLING Micro Strike

AREA/SITE/ROAD LIGHTER

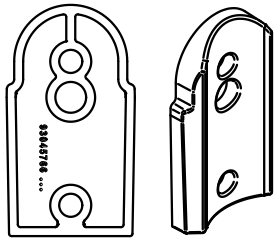
ADDITIONAL INFORMATION (CONT'D)

MOUNTING (CONT'D)



Square Arm Mounting Block –Arm mount block for ease of installation. Compatible with S2 drill patterns from 2.5" to 4.5"

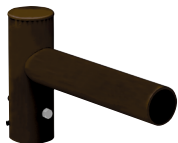
ACCESSORY



ROUND POLE ADAPTER



WB-AREA-XX



SPOKE BRACKET (single arm shown)
Horizontal round arm tenon adapters for use with MAF mounting type or accessory kit. Reference SBH Spoke Pole Top Brackets for ordering information.

SLING Micro Strike

AREA/SITE/ROAD LIGHTER

DATE: _____ LOCATION: _____

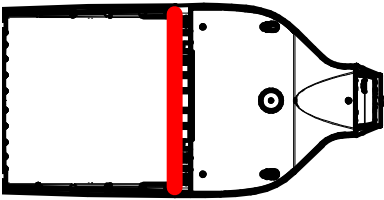
TYPE: _____ PROJECT: _____

CATALOG #: _____

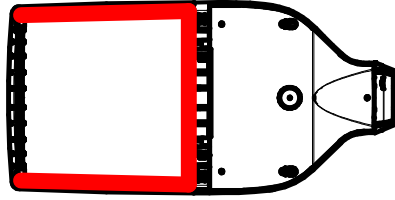
ADDITIONAL INFORMATION (CONT'D)

CONFIGURATIONS

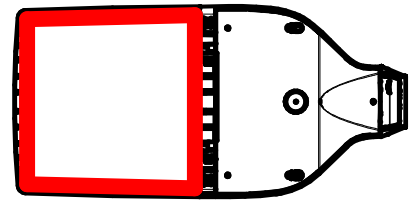
ASLx HSS-90-B-xx



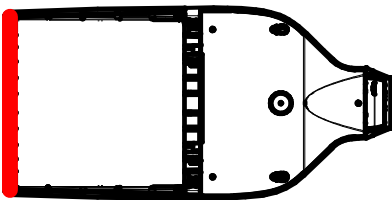
ASLx HSS-270-BSS-xx



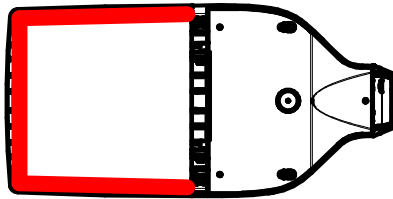
ASLx HSS-360-xx



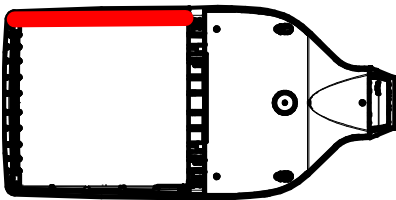
ASLx HSS-90-F-xx



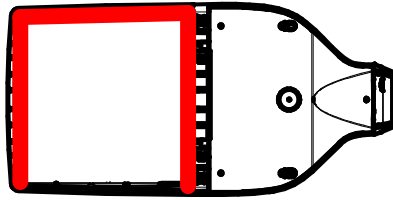
ASLx HSS-270-FSS-xx



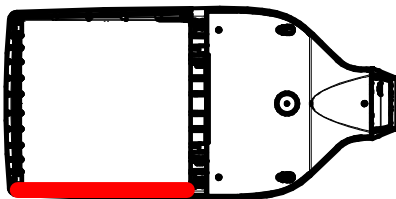
ASLx HSS-90-S-xx



ASLx HSS-270-FSB-xx



ASLx HSS-90-S-xx



ASLx HSS-270-FSB-xx

