

SLING TradeSELECT

AREA/SITE/ROAD LIGHTER

tradeSELECT™

FEATURES

- Compact sleek design with multiple lumen output configurations and simple installation
- The SLING includes a universal mounting block for easy pole installation or mast arm accessory for 2-3/8 ft OD roadway brackets
- Micro Strike optical distributions of Type 3 or 4W
- 1.5G rated for high vibration applications including bridges and overpasses



SLING (ASL1)

SPECIFICATIONS

CONSTRUCTION

- Die-cast housing with hidden vertical heat fins that are optimal for heat dissipation while keeping a clean smooth outer surface
- Corrosion resistant, die-cast aluminum housing with powder coat paint finish
- Separate optical and electrical compartment for improved thermal management and optimum component operation
- TGIC thermoset polyester powder paint finish applied at nominal 2.5 mil thickness

OPTICS

- Entire optical aperture illuminates to create a larger luminous surface area resulting in a low glare appearance without sacrificing optical performance
- Premium engineered individual acrylic lenses deliver IES Type 3 and 4W distributions
- Lens distributions are field rotatable (in 90° increments) or exchangeable for job site fine-tuning
- 4000K (70 CRI) CCT
- 160 midpower LEDs
- Zero uplight at 0 degrees of tilt

INSTALLATION

- Universal mounting block works with #2 drill pattern
- Fixture ships with slotted mounting block to accommodate wide range of drill patterns for easy retrofit opportunities

INSTALLATION (CONTINUED)

- Mast arm fitter accessory or option available for 2-3/8" OD brackets with vertical tilt of +3°, 0° or -3°

ELECTRICAL

- Universal 120-277 VAC input voltage, 50/60 Hz
- Ambient operating temperature -40° C to 40° C
- Drivers have greater than 90% power factor and less than 20% THD
- LED drivers have output power over-voltage, over-current protection and short circuit protection with auto recovery
- Built in driver surge protection of 6kV.

CONTROLS

- 0-10 Volt Dimmable Driver Standard controls

CERTIFICATIONS

- Listed to UL1598 and CSA C22.2#250.0-24 for wet locations and 40°C ambient temperatures
- 1.5G rated for ANSI C136.31 high vibration applications
- IP65 optical assembly
- DLC (DesignLights Consortium Qualified), with some Premium Qualified configurations. Please refer to the DLC website for specific product qualifications at www.designlights.org
- This product qualifies as a "designated country construction material" per FAR 52.225-11 Buy American-Construction Materials under Trade Agreements effective 04/23/2020. See Buy American Solutions

WARRANTY

- 5 Year warranty

| KEY DATA | |
|----------------------|---------------------|
| Lumen Range | 12,000–18,000 |
| Wattage Range | 100–135 |
| Efficacy Range (LPW) | 127–138 |
| Weight lbs. (kg) | 14.5–17.5 (6.6–8.0) |

STOCK ORDERING INFORMATION

| Catalog Number | Lumens | Wattage | LED Count | CCT/CRI | Voltage | Distribution | Mounting | Finish |
|------------------|--------|---------|-----------|-------------|----------|--------------|---------------|----------------------------|
| ASL1-100-4W-ASQU | 12000 | 100 | 160L | 4000K/70CRI | 120-277V | 4W | Universal Arm | Dark Bronze Matte Textured |
| ASL1-100-3-ASQU | 12000 | 100 | 160L | 4000K/70CRI | 120-277V | 3 | Universal Arm | Dark Bronze Matte Textured |
| ASL1-135-4W-ASQU | 18000 | 135 | 160L | 4000K/70CRI | 120-277V | 4W | Universal Arm | Dark Bronze Matte Textured |
| ASL1-135-3-ASQU | 18000 | 135 | 160L | 4000K/70CRI | 120-277V | 3 | Universal Arm | Dark Bronze Matte Textured |

STOCK POLE COMBO

| Catalog Number | Pole | Single or Double | Fixture | Distribution |
|------------------------|---------------------------|--------------------|------------------|--------------|
| ASL1-100-4K7-3-S20 | 20' Square Straight Steel | Single Head | ASL-160L-100-4K7 | 3 |
| ASL1-100-4K7-4W-S20 | 20' Square Straight Steel | Single Head | ASL-160L-100-4K7 | 4W |
| ASL1-100-4K7-3-S20-2X | 20' Square Straight Steel | Double Head (180°) | ASL-160L-100-4K7 | 3 |
| ASL1-100-4K7-4W-S20-2X | 20' Square Straight Steel | Double Head (180°) | ASL-160L-100-4K7 | 4W |
| ASL1-100-4K7-3-S25 | 25' Square Straight Steel | Single Head | ASL-160L-100-4K7 | 3 |
| ASL1-100-4K7-4W-S25 | 25' Square Straight Steel | Single Head | ASL-160L-100-4K7 | 4W |
| ASL1-100-4K7-3-S25-2X | 25' Square Straight Steel | Double Head (180°) | ASL-160L-100-4K7 | 3 |
| ASL1-100-4K7-4W-S25-2X | 25' Square Straight Steel | Double Head (180°) | ASL-160L-100-4K7 | 4W |
| ASL1-135-4K7-3-S20 | 20' Square Straight Steel | Single Head | ASL-160L-135-4K7 | 3 |
| ASL1-135-4K7-4W-S20 | 20' Square Straight Steel | Single Head | ASL-160L-135-4K7 | 4W |
| ASL1-135-4K7-3-S20-2X | 20' Square Straight Steel | Double Head (180°) | ASL-160L-135-4K7 | 3 |
| ASL1-135-4K7-4W-S20-2X | 20' Square Straight Steel | Double Head (180°) | ASL-160L-135-4K7 | 4W |
| ASL1-135-4K7-3-S25 | 25' Square Straight Steel | Single Head | ASL-160L-135-4K7 | 3 |
| ASL1-135-4K7-4W-S25 | 25' Square Straight Steel | Single Head | ASL-160L-135-4K7 | 4W |
| ASL1-135-4K7-3-S25-2X | 25' Square Straight Steel | Double Head (180°) | ASL-160L-135-4K7 | 3 |
| ASL1-135-4K7-4W-S25-2X | 25' Square Straight Steel | Double Head (180°) | ASL-160L-135-4K7 | 4W |

ACCESSORIES (ORDERED SEPARATELY)

| Catalog Number | Description |
|--|--|
| <input type="checkbox"/> ASL1-HSS-90-B-XXX ¹ | House Side Shield Back 90 deg |
| <input type="checkbox"/> ASL1-HSS-90-F-XXX ¹ | House Side Shield Front 90 deg |
| <input type="checkbox"/> ASL1-HSS-90-S-XXX ¹ | House Side Shield Side 90 deg |
| <input type="checkbox"/> ASL1-HSS-270-BSS-XXX ¹ | House Side Shield Back, Side & Side 270 deg |
| <input type="checkbox"/> ASL1-HSS-270-FSS-XXX ¹ | House Side Shield Front, Side & Side 270 deg |
| <input type="checkbox"/> ASL1-HSS-270-FSB-XXX ¹ | House Side Shield Front, Side & Back 270 deg |
| <input type="checkbox"/> ASL1-HSS-360-XXX ¹ | House Side Shield 360 deg |
| <input type="checkbox"/> ASL-MAF | Mast arm kit with wildlife shield for mounting on 2 3/8" OD arms |
| <input type="checkbox"/> SETA2-XX ¹ | Square pole tenon adapter (4 at 90 degrees) (2 3/8" OD tenon) |
| <input type="checkbox"/> RETA2-XX ¹ | Round pole tenon adapter (4 at 90 degrees) (2 3/8" OD tenon), requires CL1S-RPA4-ACC-XX for each luminaire |
| <input type="checkbox"/> RARBC160L | Backlight Control 160L |
| <input type="checkbox"/> CL1S-RPA4-ACC-XX ¹ | Round Pole Adapter (* denotes pole diameter; 3 = 3 1/4" - 3 3/4"; 4* = 3 7/8" - 6") |
| <input type="checkbox"/> ASL-ARMMTG-XX ¹ | Arm mounting kit for side of pole attachment |
| <input type="checkbox"/> WB-AREA-XX ¹ | Wall bracket, Compatible with standard arm mount option |

¹ Replace XX or XXX with color choice, eg.: DB for Dark Bronze or BLT for Black Matte Textured

PERFORMANCE DATA

| Description | Nominal Wattage | System Watts | Dist. Type | 4K (4000K NOMINAL 70 CRI) | | | | |
|-------------|-----------------|--------------|------------|---------------------------|------------------|---|---|---|
| | | | | Lumens | LPW ¹ | B | U | G |
| ASL1 | 100 | 88.0 | 2 | 11886 | 135 | 2 | 0 | 2 |
| | | | 3 | 12010 | 136 | 2 | 0 | 2 |
| | | | 4W | 11787 | 134 | 2 | 0 | 3 |
| | | | 5QW | 12070 | 137 | 4 | 0 | 2 |
| | 135 | 133.3 | 2 | 17999 | 135 | 3 | 0 | 3 |
| | | | 3 | 17776 | 133 | 2 | 0 | 2 |
| | | | 4W | 17569 | 132 | 2 | 0 | 3 |
| | | | 5QW | 18064 | 136 | 4 | 0 | 2 |

¹ VAC input Lumen values are from photometric test performed in accordance with IESNA LM-79-08. Data is considered to be representative of the configurations. Actual performance may differ as a result of end-user environment and application.

ELECTRICAL DATA

| Family | Nominal Wattage | Input Voltage (Volts) | Current (AMPS) | System Power (Watts) |
|--------------|-----------------|-----------------------|----------------|----------------------|
| SLING (ASL1) | 100 | 120 | 0.73 | 88 |
| | | 208 | 0.42 | |
| | | 240 | 0.37 | |
| | | 277 | 0.32 | |
| | | 347 | 0.25 | |
| | | 480 | 0.18 | |
| | 135 | 120 | 1.11 | 133.3 |
| | | 208 | 0.64 | |
| | | 240 | 0.56 | |
| | | 277 | 0.48 | |
| | | 347 | 0.38 | |
| | | 480 | 0.28 | |

PROJECTED LUMEN MAINTENANCE

| Ambient Temperature | OPERATING HOURS | | | | | |
|---------------------|-----------------|--------|-------------------------------------|--------|---------|-------------|
| | 0 | 25,000 | TM-21-11 ¹ L96 60,000 | 50,000 | 100,000 | L70 (Hours) |
| 25°C / 77°F | 1.00 | 0.97 | 0.96 | 0.95 | 0.91 | 408,000 |
| 40°C / 104°F | 0.99 | 0.96 | 0.95 | 0.94 | 0.89 | 356,000 |

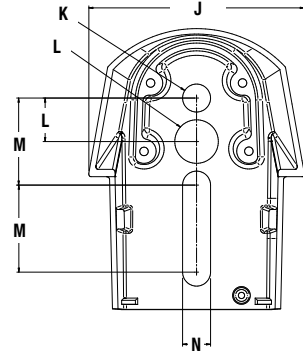
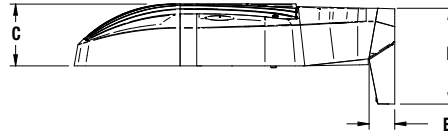
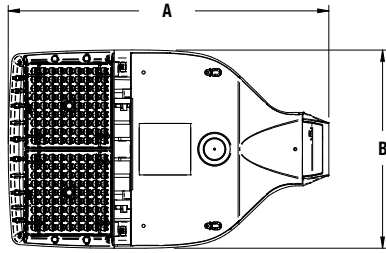
¹ Projected per IESNA TM-21-11 (* 2100mA, 105°C Ts, 6,000hrs)

LUMINAIRE AMBIENT TEMPERATURE FACTOR (LATF)

| Ambient Temperature | | Lumen Multiplier |
|---------------------|--------|------------------|
| 0° C | 32° F | 1.06 |
| 10° C | 50° F | 1.03 |
| 20° C | 68° F | 1.01 |
| 25° C | 77° F | 1.00 |
| 30° C | 86° F | 0.99 |
| 40° C | 104° F | 0.97 |
| 50° C | 122° F | 0.94 |

Use these factors to determine relative lumen output for average ambient temperatures from 0-40°C (32-104°F).

DIMENSIONS



ASL1

| A | B | C | D | E | ASL1 EPA@0° | ASL1 w/ HSS |
|-------|-------|------|-------|------|----------------------|----------------------|
| 18.9" | 11.7" | 3.7" | 5.65" | 1.5" | .46 ft. ² | .73 ft. ² |
| 480mm | 297mm | 94mm | 144mm | 38mm | .14 m ² | .22 m ² |

Weight

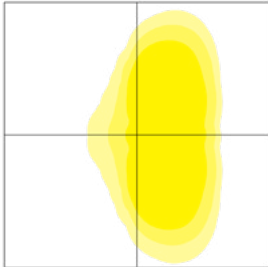
| | |
|------|----------------------|
| ASL1 | 14.47 lbs (6.56 kgs) |
|------|----------------------|

| J | K | L | M | N |
|-------|-------|-------|-------|-------|
| 4.33" | .562" | .875" | 1.75" | .562" |
| 480mm | 297mm | 94mm | 610mm | 297mm |

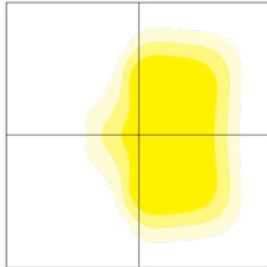
PHOTOMETRY

The following diagrams represent the general distribution options offered for this product. For detailed information on specific product configurations, see [website photometric test reports](#).

Type III



Type IV



PROGRAMMED CONTROLS

ADD-AutoDim Timer Based Options

- Light delay options from 1-9 hours after the light is turned on to dim the light by 10-100%. To return the luminaire to its original light level there are dim return options from 1-9 hours after the light has been dimmed previously.

EX: ADD-6-5-R6

| ADD Control Options | Configurations Choices | Example Choice Picked |
|---------------------|------------------------|-----------------------|
| Auto-Dim Options | 1-9 Hours | 6 |
| Auto-Dim Brightness | 0-9% Brightness | 5 |
| Auto-Dim Return | Delay 0-9 Hours | R6 |

ADT-AutoDim Time of Day Based Option

- Light delay options from 1AM-9PM after the light is turned on to dim the light by 10-100%. To return the luminaire to its original light level there are dim return options from 1AM-9PM after the light has been dimmed previously.

EX: ADT-6-5-R6

| ADD Control Options | Configurations Choices | Example Choice Picked |
|---------------------|------------------------|-----------------------|
| Auto-Dim Options | 12-3 AM and 6-11 PM | 6 |
| Auto-Dim Brightness | 0-9% Brightness | 5 |
| Auto-Dim Return | 12-6 AM and 9-11P | R6 |

SLING TradeSelect

AREA/SITE/ROAD LIGHTER

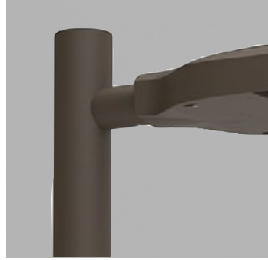
| | |
|------------|-----------|
| DATE: | LOCATION: |
| TYPE: | PROJECT: |
| CATALOG #: | |

ADDITIONAL INFORMATION

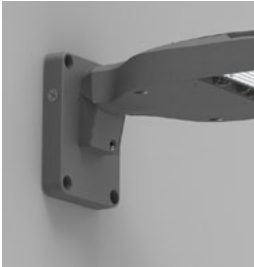
MOUNTING



Arm Mount – Fixture ships with integral arm for ease of installation. Compatible with Hubbell Outdoor S2 drill pattern.

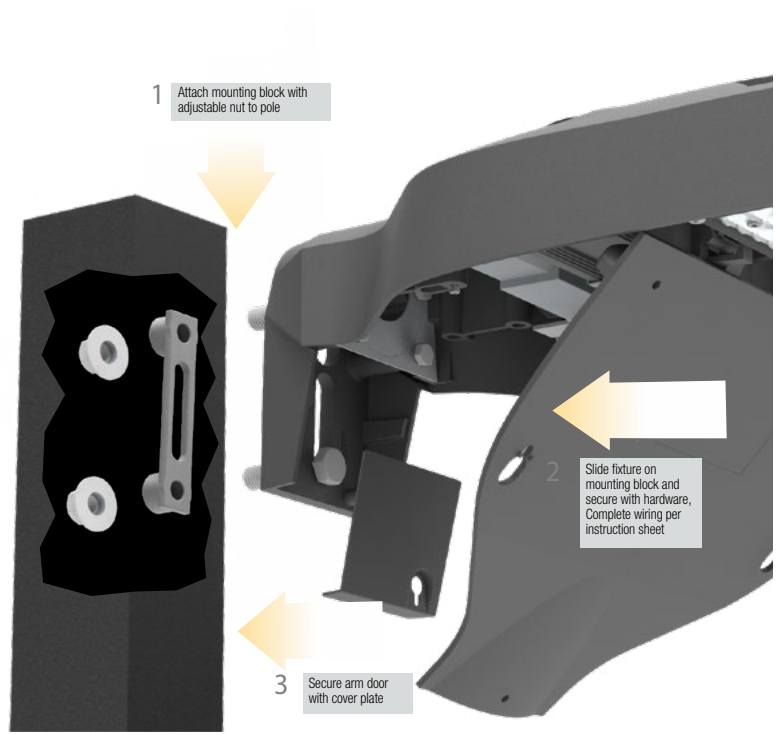


MAF – Fits 2-3/8" OD arms Roadway applications.

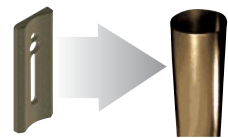


Wall Mount – Wall mount bracket designed for building mount applications.

Universal Mount – Universal mounting block for ease of installation. Compatible with drill patterns from 2.5" to 4.5"



ACCESSORY



ROUND POLE ADAPTER



WB-AREA-XX

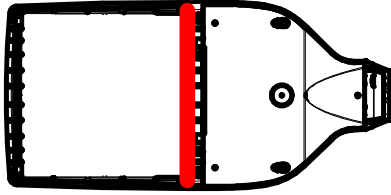


SPOKE BRACKET (single arm shown)
Horizontal round arm tenon adapters for use with MAF mounting type or accessory kit. Reference SH Spoke Pole Top Brackets for ordering information.

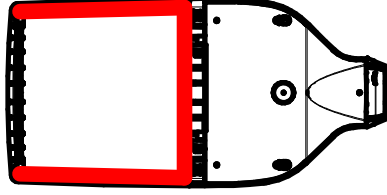
ADDITIONAL INFORMATION (CONT'D)

CONFIGURATIONS

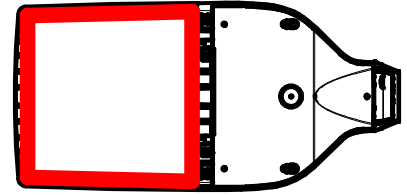
ASLx HSS-90-B-xx



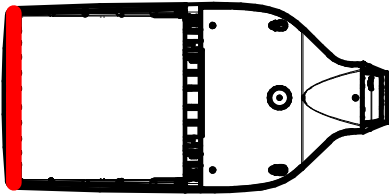
ASLx HSS-270-BSS-xx



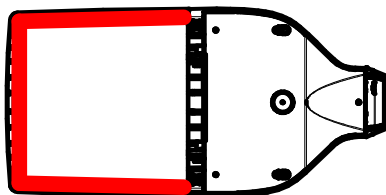
ASLx HSS-360-xx



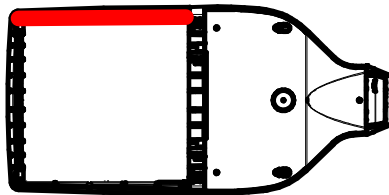
ASLx HSS-90-F-xx



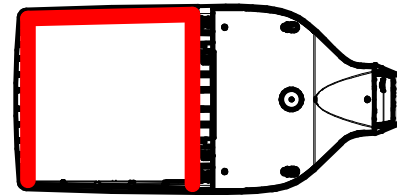
ASLx HSS-270-FSS-xx



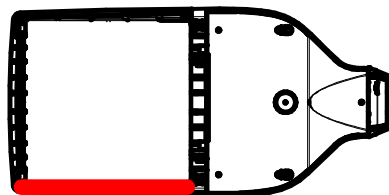
ASLx HSS-90-S-xx



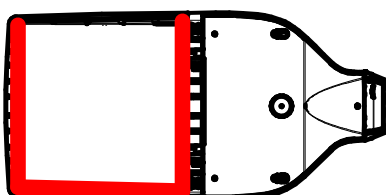
ASLx HSS-270-FSB-xx



ASLx HSS-90-S-xx



ASLx HSS-270-FSB-xx



USE OF TRADEMARKS AND TRADE NAMES

All product and company names, logos and product identifies are trademarks ™ or registered trademarks ® of Hubbell Lighting, Inc. or their respective owners. Use of them does not necessarily imply any affiliation with or endorsement by such respective owners.