

Federal Globe™



Federal Globe Large

FEATURES

- Reliable, uniform, glare free illumination
- Types II, III, IV and V distributions
- 3000K, 4000K, 5000K CCT
- Integral 6kV surge suppression
- IP66



SPECIFICATIONS

OPTICAL MODULE

- Light emitting diode (LED) assembly shall be sealed to a die-cast anodized aluminum heat sink with an injection molded silicone rubber gasket and stainless steel bezel, IP66.
- LED optics shall be injection molded PMMA acrylic and be mounted to a metal printed circuit board with a uniform conformal coating over the panel surface and electrical features

INSTALLATION

- The electrical assembly shall be mounted to a prewired internal service tray and accessed by releasing the service latch to allow the fixture to hinge open into a service position

ELECTRICAL

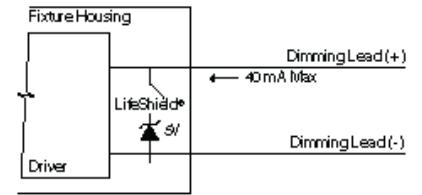
- Upgrade kits shall accept 120 thru 277 50/60Hz input voltage have integral surge protection
- Existing luminaires may not have 0-10V control leads in place prior to the upgrade kit, consult factory for dimming and control solutions

ELECTRICAL (CONTINUED)

- Drivers shall be U.L. recognized, have a minimum starting temperature of -30°C and have a 0-10v dimming interface with a dimming range of 10- 100%
- Drivers shall have a power factor ≥ 0.90 and THD of $\leq 20\%$ at full load with an inrush current maximum of <20.0 Amps maximum at 230VAC
- Drivers shall not be compatible with current sourcing dimmers, consult factory for current list of known compatible dimming systems
- Approved dimmers include Lutron Diva AVTV, Lutron Nova NFTV and NTFTV
- LifeShield™ shall be provided with all configurations for added protection in the event of abnormally excessively high ambient temperature conditions

ELECTRICAL (CONTINUED)

- Surge protector shall be U.L. recognized and have a surge current rating of 10,000 Amps using the industry standard 8/20uSec wave and surge rating of 372J



Fixture Equivalent Circuit

CERTIFICATIONS

- Upgrade kits shall be listed with ETL for outdoor, wet location use, UL1598, UL 8750 and Canadian CSA Std. C22.2 no.250
- IP66

WARRANTY

- 5 year warranty

ORDERING GUIDE

Example: PROS-LK-Y2-2040

CATALOG #

Upgrade Kits	Globe Style	Optical System	Color Temperature	Driver	Options
FGL-LK Compatible with Federal Globe™ large scale HID luminaire	Standard Lens Globe SLG Two-piece globe Standard Acorn Globe SAL One-piece globe	Y2-36LED Type 2 Y3-36LED Type 3 Y4-36LED Type 4 Y5-36LED Type 5	3K Warm White, 3000K output 4K Neutral White, 4000K output 5K Bright White, 5000K output	120 thru 277 volt 600 600mA drive current, 73 watts	347 347VAC input 480 480VAC input WIH Integral HBA wiHUBB IFM transceiver and antenna

DELIVERED LUMENS

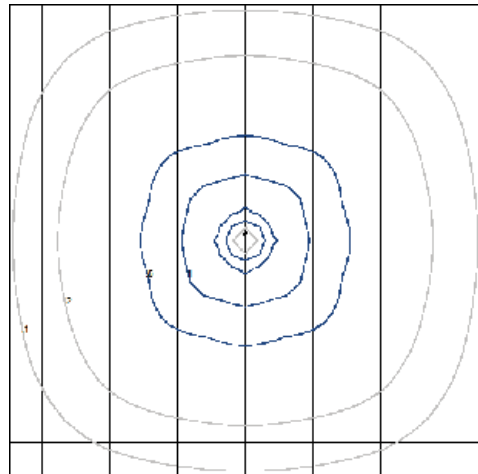
PERFORMANCE DATA (36 LEDs, 600 mA DRIVE CURRENT, 73 WATTS)

Type	Distribution	3000K 70CRI					4000K 70CRI					5000K 70CRI					Amps @ 120VAC	Amps @ 277VAC
		Lumen	Bug Rating			Efficacy (Lm/W)	Lumen	Bug Rating			Efficacy (Lm/W)	Lumen	Bug Rating			Efficacy (Lm/W)		
			B	U	G			B	U	G			B	U	G			
Type 2	SAL	3601	1	4	2	49.3	4654	2	4	2	63.8	5343	2	4	2	49.3	.6	.3
Type 3		3236	1	4	2	44.3	4182	1	4	2	57.3	4801	1	4	2	44.3		
Type 4	SLG	3527	1	4	2	48.3	4558	1	4	2	62.4	5233	1	4	2	48.3		
Type 5		3215	2	4	2	44.0	4155	2	4	2	56.9	4740	2	4	2	44.0		

	3K	4K	5K
CCT Average	3000K	4200K	5100K
CCT Range	2800K - 3175K	3800K - 4600K	4600K - 5600K
CRI Minimum	≤70	≤70	≤80

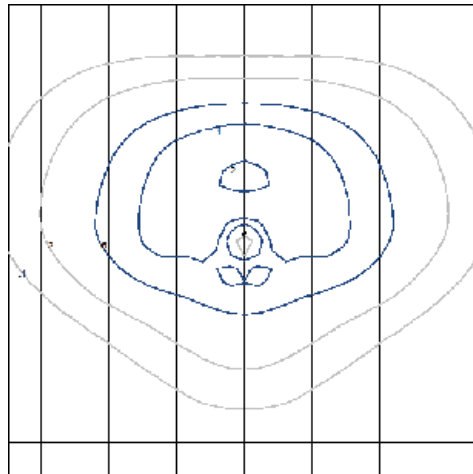
ISOLINE TEMPLATE

FGL-LK-SLG-Y5-36LED-5K-600



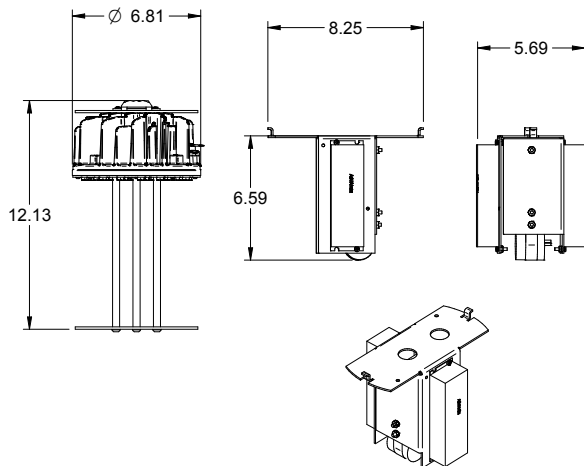
10' MOUNTING HEIGHT

FGL-LK-SLG-Y3-36LED-5K-600



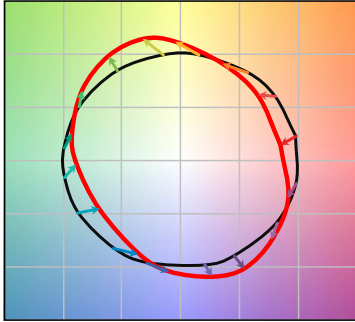
10' MOUNTING HEIGHT

DIMENSIONS



TM-30 DATA

COLOR VECTOR GRAPHIC

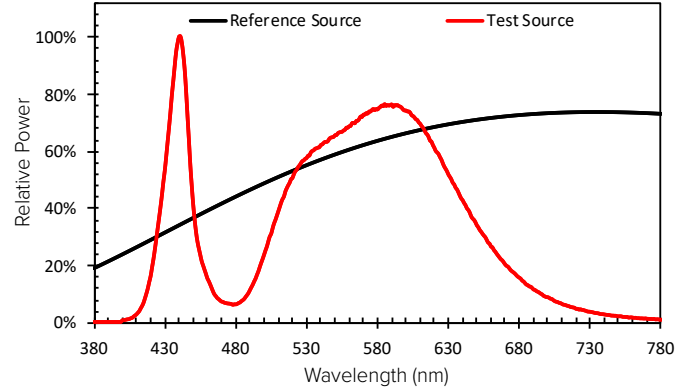


— Reference Illuminant — Test Source

TEST SOURCE

R _f	68
R _g	99
CCT(K)	3947
D _{uv}	0.0004
x	0.3831
y	0.3793
CIE R _a	72

SPECTRAL POWER DISTRIBUTION COMPARISON



ELECTRICAL DATA

Configuration	Electrical Characteristics											Dimming					
	LED Drive mA	System Watts	Line Voltage		Amps AC					Min. Power Factor	Max THD (%)	Dimming Range	Source Current Out		Absolute Voltage		
			VAC	Hz	120	208	220	240	277				Min	Max	Min	Max	
2020	2000 series	255	25	120-277	50/60	0.35	0.15	0.35	0.15	0.15	≥.9	20	10% to 100%	0mA	1mA	0V	10V
2040																	
2050																	
3020	3000 series	400	42	120-277	50/60	0.21	0.09	0.21	0.09	0.09	≥.9	20	10% to 100%	0mA	1mA	0V	10V
3040																	
3050																	

TM-21 Lifetime Calculation - Projected Lumen Maintenance (25°C / 77°F)

Hours	0	25,000	36,000	50,000	100,000	Reported L70
Projected Lumen Maintenance	100%	99.0%	99.5%	98.0%	95.0%	>60000