

DATE:	LOCATION:
TYPE:	PROJECT:
CATALOG #:	

**FEATURES**

- Reliable, efficient operation
- Type 2, 3, 4, 5 distributions
- 3000K, 4000K, 5000K CCT
- 0-10V dimming ready
- Integral surge protection
- Scaled family members



Federal Globe™



Federal Globe Small

**SPECIFICATIONS**

**CONSTRUCTION**

- Luminaire housings are cast aluminum, A356 alloy
- Outer lens are acrylic and sealed to the housing with a silicone gasket on the top and bottom
- All internal and external hardware are stainless steel
- Finial and optional cast filigree basket are painted to match housing
- Luminaire finish shall consist of a five stage pretreatment regimen with a polymer primer sealer, oven dry off, and top coated with a thermoset super TGIC polyester powder coat finish
- Luminaire finish shall meet the AAMA 2604-05 performance specification which includes passing a 3000 hour salt spray test for corrosion resistance

**OPTICAL MODULE**

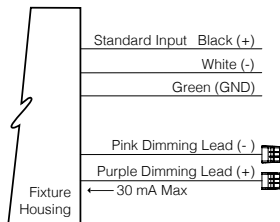
- Light emitting diode (LED) assembly are sealed to a die-cast anodized aluminum heat sink with an injection molded silicone rubber gasket and stainless steel bezel, IP66
- LED optics are injection molded PMMA acrylic and be mounted to a metal printed circuit board with a uniform conformal coating over the panel surface and electrical features

**INSTALLATION**

- The electrical assembly are mounted to a prewired internal service tray and accessed by releasing the service latch to allow the fixture to hinge open into a service position

**ELECTRICAL**

- Luminaires accept 120 thru 277 50/60Hz input voltage have integral surge protection and wire leads for controls
- Drivers are U.L recognized, have a minimum starting temperature of -30°C and have a 0-10v dimming interface with a dimming range of 10- 100%
- Drivers have a power factor  $\geq 90$  and THD of  $\leq 20\%$  at full load with an inrush current maximum of  $< 20.0$  Amps maximum at 230VAC
- Drivers are not be compatible with current sourcing dimmers, consult factory for current list of known compatible dimming systems



- Thermal shield is provided with all configurations for added protection in the event of abnormally excessively high ambient temperature conditions
- Surge protector are U.L. recognized and have a surge current rating of 10,000 Amps using the industry standard 8/20uSec wave and surge rating of 372J

**CONTROLS**

- SCP shall have an integral surge protection device with a current rating of 10,000 Amps using the industry standard 8/20uSec wave and sure rating of 372J
- Sensor not intended for use with additional photo-control, wireless control or dimming systems

**CERTIFICATIONS**

- Luminaire shall be listed with ETL for outdoor, wet location use, UL1598, UL 8750 and Canadian CSA Std. C22.2 no.250

**WARRANTY**

- 5 year warranty

KEY DATA	
Lumen Range	4,478–5,183
Wattage Range	53
Efficacy Range (LPW)	61–71
Weight	22 lbs / 14.06 kg
EPA	1.19

**ORDERING GUIDE**

Example: FGS-RB-Y3-36LED-4K-450-BLS-SCP-TRA1M

CATALOG #

**HOUSING**

FGS									
Luninaire	Decorative Style		Globe Style	Optical System		Color Temperature		Driver	Color
<b>FGS</b> Federal Globe (Small scale housing - LED) Slips over a 4"/100mm O.D. pole	<b>RB</b>	Rib Fitter Design	Standard Acorn Globe	<b>Y2-36LED</b>	Type II	<b>3K</b>	Warm White, 3000K, 70 CRI	<b>450</b> 450mA drive current, 53 watts	<b>BLS</b> Black Gloss Smooth
	<b>LF</b>	Leaf Fitter Design	<b>SAL</b> One-piece globe	<b>Y3-36LED</b>	Type III	<b>4K</b>	Neutral White, 4000K, 70 CRI		<b>BLT</b> Black Matte Textured
				<b>Y4-36LED</b>	Type IV	<b>5K</b>	Bright White, 5000K, 70 CRI		<b>DBS</b> Dark Bronze Gloss Smooth
				<b>Y5-36LED</b>	Type V				<b>DBT</b> Dark Bronze Matte Textured
									<b>GTT</b> Graphite Matte Textured
									<b>LGS</b> Light Grey Gloss Smooth
									<b>LGT</b> Light Grey Matte Textured
									<b>PSS</b> Platinum Silver Gloss Smooth
									<b>VGT</b> Verde Green Matte Textured
									<b>WHS</b> White Gloss Smooth
									<b>WHT</b> White Matte Textured
									<b>Color Option</b>
									<b>CC</b> <sup>1</sup> Custom Color

Options		Mounting (Optional)	
<b>FS1</b>	Single fuse holder, fuse by others	<b>Pole Mount</b>	
<b>FS2</b>	Double fuse holder, fuse by others	Bolts to the side of a 4"/100mm DIA. or 5"/125mm DIA. pole	
<b>TA3</b>	Tenon adaptor slips over a 3"/75 mm O.D. by 4"/100 mm tenon	<b>TRA1M</b>	TRA1M
		<b>TRA1L</b>	TRA1L
<b>AD5</b>	Adaptor to slip over a 5"/125mm O.D. pole and is 4"/100mm long. Secures to the pole with four stainless steel set screws	<b>TRA5U</b>	TRA5U
		<b>TRA6U</b>	TRA6U
<b>TA23</b>	Tenon adaptor, slips over a 2 3/8" O.D. by 4"/100mm tenon	<b>TRA55</b>	TRA55
		<b>TRA56</b>	TRA56 (4" only)
<b>ALF</b>	Cast filigree basket	<b>TRA57</b>	TRA57
<b>PHC</b>	Integral button type photo control sensor. Specify line voltage 120/277V	<b>Wall Mount</b>	
		<b>WMA1M</b>	WMA1M
<b>347</b>	347VAC input	<b>WMA1L</b>	WMA1L
<b>480</b>	480VAC input	<b>WMA3</b>	WMA3
<b>SCP</b>	Sensor Control Programmable pole accessory is available to provide occupancy detection for outdoor applications meeting California Title 24	<b>WMA35U</b>	WMA35U
		<b>WMA36U</b>	WMA36U
		<b>WMA55</b>	WMA55
		<b>WMA56</b>	WMA56
		<b>WMA57</b>	WMA57

Notes:

1 Consult factory for custom color, marine and corrosive finish options

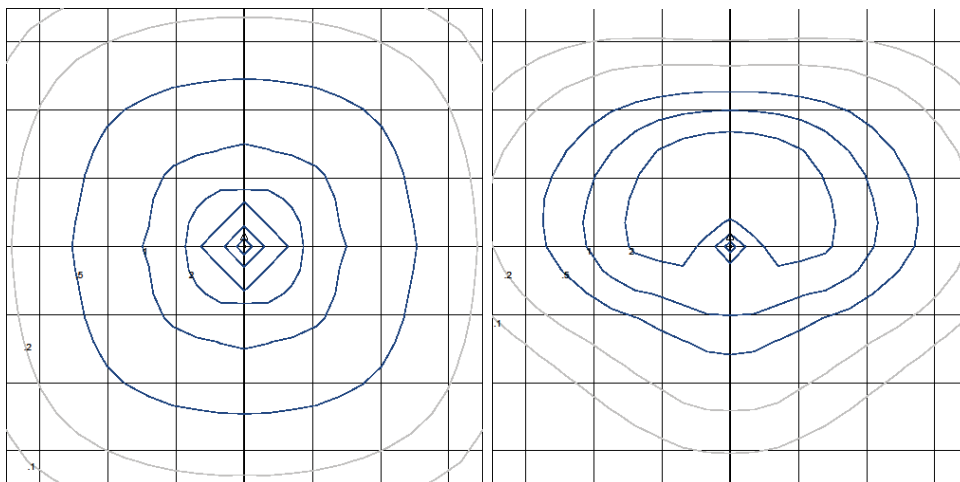
**DELIVERED LUMENS**

**PERFORMANCE DATA (36 LEDs, 600 mA DRIVE CURRENT, 73 WATTS)**

Type	Distribution	3000K 70CRI					4000K 70CRI					5000K 70CRI					Drive Current	System Watts
		Lumen	Bug Rating			Efficacy (Lm/W)	Lumen	Bug Rating			Efficacy (Lm/W)	Lumen	Bug Rating			Efficacy (Lm/W)		
			B	U	G			B	U	G			B	U	G			
Type 2	SAL	4997	2	4	3	68	5125	2	4	3	70	5183	2	4	3	71	45	53
Type 3		4499	1	4	2	62	4615	1	4	2	63	4667	1	4	2	64		
Type 4		4900	1	4	3	67	5026	1	4	2	69	5083	1	4	2	70		
Type 5		4478	2	4	2	61	4593	3	4	2	63	4645	3	4	2	64		

	3K	4K	5K
CCT Average	3000K	4200K	5100K
CCT Range	2800K - 3175K	3800K - 4600K	4600K - 5600K
CRI Minimum	≤80	≤70	≤70

**ISOLINE TEMPLATE**



**TM-21 LIFETIME CALCULATION**

Ambient Temp.	0	25,000	50,000	TM-21-11 60,000	100,000	Reported L70 (HRS)
25°C/77°F	100%	97%	96%	95%	93%	>60Khrs.
40°C/104°F	100%	95%	93%	92%	89%	

**DIMENSIONS**

