

DATE:	LOCATION:
TYPE:	PROJECT:
CATALOG #:	

**FEATURES**

- Reliable, uniform, glare free illumination
- Types II, III, IV, V distributions
- 3000K, 4000K, 5000K CCT
- 0-10V dimming ready
- Integral surge suppression
- Integral thermal protection

Parkway Square®



Parkway Square PKWM Vertical



3000K and warmer CCTs only

**SPECIFICATIONS**

**CONSTRUCTION**

- All housing components shall be cast aluminum, sealed with continuous silicone rubber gaskets
- Hoods shall be of fabricated construction with seamless blended outside corners
- Secondary lens shall be clear flat tempered soda lime glass
- All internal and external hardware shall be stainless steel
- Luminaire finish shall consist of a five stage pretreatment regimen with a polymer primer sealer, oven dry off, and top coated with a thermoset super TGIC polyester powder coat finish
- Luminaire finish shall meet the AAMA 2604-05 performance specification which includes passing a 3000 hour salt spray test for corrosion resistance

**LED/OPTICS**

- LEDs shall be mounted to a metal printed circuit board assembly (MCPCB) with a uniform conformal coating over the panel surface and electrical features
- LED optics shall be clear injection molded PMMA acrylic

**LED/OPTICS (CONTINUED)**

- MCPCB and optic shall be sealed to a die-cast anodized aluminum heat sink with an injection molded silicone rubber gasket. IP66

**INSTALLATION**

- Luminaire shall be attached to the arm assembly with four 1/4-20 stainless steel bolts. The connection shall be sealed with a silicone compression gasket
- Pole mounted arms shall bolt to a square pole or a 4"/100mm diameter round pole and secured with two bolts with a minimum 3/8-16 thread size, hardware by others
- Wall mounted arms and brackets shall require mounting hardware by others
- Gear compartment shall be accessed via the removal of four 1/4-20 fasteners. Driver and surge suppressor shall be mounted to a pre-wired tray with quick disconnects that may be removed from the gear compartment

**ELECTRICAL**

- Luminaires shall have integral surge protection that shall be U.L. recognized and have a surge current rating of 10,000 Amps using the industry standard 8/20uSec wave and surge rating of 372J

**ELECTRICAL (CONTINUED)**

- Drivers shall be U.L. recognized with an inrush current maximum of <20.0 Amps maximum at 230VAC
- Luminaire shall be capable of operating at 100% brightness in a 40°C environment. Both driver and optical array shall have integral thermal protection that will dim the luminaire upon detection of temperatures in excess of 85°C

**CERTIFICATIONS**

- Luminaire shall be listed with ETL for outdoor, wet location use, UL1598, UL 8750 and Canadian CSA Std. C22.2 no.250

**WARRANTY**

- 5 year warranty

KEY DATA	
Wattage Range	13-39
Input Current Range (mA)	350 mA

**ORDERING GUIDE**

Example: PKWM-ANG-Y3HC-32LED-4K-500-BLS-PSA-TU

CATALOG #

**HOUSING**

Luninaire		Hood	Distribution	Color Temperature		Drive Current		Fixture Finish			
PKWM	Parkway Square Accent (small scale)	<b>ANG</b>	Angled	<b>Vertical LED - Clear Lens</b>		<b>32LED-3K</b>	32LED-3K	(120–277 VAC input)			
		<b>STR</b>	Straight	<b>Y2VC</b>	Y2VC	<b>32LED-4K</b>	32LED-4K	<b>350</b>	350mA, 38 watts		
		<b>DBL</b>	Double	<b>Y3VC</b>	Y3VC	<b>32LED-5K</b>	32LED-5K	<b>525</b>	525mA, 58 watts	<b>BLS</b>	Black Gloss Smooth
				<b>Y4VC</b>	Y4VC					<b>BLT</b>	Black Matte Textured
		<b>Y5VC</b>	Y5VC	<b>Vertical LED - Diffused Lens</b>						<b>DBS</b>	Dark Bronze Gloss Smooth
		<b>Y2VD</b>	Y2VD							<b>DBT</b>	Dark Bronze Matte Textured
		<b>Y3VD</b>	Y3VD							<b>GTT</b>	Graphite Matte Textured
		<b>Y4VD</b>	Y4VD							<b>LGS</b>	Light Grey Gloss Smooth
		<b>Y5VD</b>	Y5VD							<b>LGT</b>	Light Grey Matte Textured
										<b>VGT</b>	Verde Green Matte Textured
										<b>WHS</b>	White Gloss Smooth
										<b>WHT</b>	White Matte Textured
										<b>Color Option</b>	
										<b>CC</b> Custom Color <sup>1</sup>	

Options	Controls	Mounting
Fusing	<b>SCP</b> Sensor Control Programmable	Standard fixture shall slip over a 4" / 100mm open top square pole or tenon or may choose one
<b>FS1</b> Single fuse holder	Pole accessory is available to provide occupancy detection for outdoor applications meeting California Title 24	<b>Tenon Mount</b>
Decorative Screen		<b>TA23</b> Tenon adapter slips over 2 3/8" O.D x 4" long tenon. Required for poles by others or used in conjunction with TEN pole option by AAL
<b>DSIN</b> Infinity pattern		<b>Wall Mount Bracket</b>
<b>DSOF</b> Offset pattern		<b>PSWM-TU</b> Fixture above with arm mounted up
<b>DSWH</b> Wheat pattern		<b>PSWM-TD</b> Fixture above with arm mounted down
<b>DSTR</b> Trio pattern		<b>PSWM-BU</b> Fixture below with arm mounted up
<b>DSSH</b> Shutter pattern		<b>PSWM-BD</b> Fixture below with arm mounted down
<b>DSCS</b> Custom pattern		<b>Pole Mounted Arm</b>
	Mounts to the side of a square pole or to the side of a 4" od pole (specify)	<b>PSA-TU</b> Fixture above with arm mounted up
		<b>PSA-TD</b> Fixture above with arm mounted down
		<b>PSA-BU</b> Fixture below with arm mounted up
		<b>PSA-BD</b> Fixture below with arm mounted down
		Visit <a href="http://currentlighting.com/aal">currentlighting.com/aal</a> for Arms, Poles & Accessories Specification Guide

Notes:

1 Consult factory for custom color, marine and corrosive finish

**LUMEN OUTPUT**

Optical System	Lens	Distribution	Light Engine	Luminaire Performance Data												Drive Current (ma)	System Watts
				3k			4k			5k							
				Delivered Lumens	Efficacy (lm/w)	Bug Rating	Delivered Lumens	Efficacy (lm/w)	Bug Rating	Delivered Lumens	Efficacy (lm/w)	Bug Rating					
YLED	Clear Lens	Type 2	Y2VC	3,369	58	1 2 2	4,222	73	2 3 2	4,470	77	2 3 3	525	58			
		Type 3	Y3VC	3,418	59	1 2 2	4,283	74	1 2 2	4,535	78	1 2 2					
		Type 4	Y4VC	3,285	57	1 2 2	4,117	71	1 2 2	4,360	75	1 3 3					
		Type 5	Y5VC	3,548	61	2 2 2	4,446	77	3 2 2	4,708	81	3 2 2					
		Type 2	Y2VC	2,452	65	1 2 2	3,073	81	1 2 2	3,253	86	1 2 2					
	Diffused Lens	Type 3	Y3VC	2,488	65	1 2 1	3,117	82	1 2 2	3,301	87	1 2 2	350	38			
		Type 4	Y4VC	2,391	63	1 2 2	2,996	79	1 2 2	3,173	84	1 2 2					
		Type 5	Y5VC	2,582	68	2 2 1	3,235	85	2 2 2	3,426	90	2 2 2					
		Type 2	Y2VD	1,938	33	1 3 2	2,343	40	1 3 2	2,531	44	1 3 2					
		Type 3	Y3VD	2,113	36	1 3 2	2,556	44	1 3 2	2,761	48	1 3 2					
		Diffused Lens	Type 4	Y4VD	2,010	35	1 3 2	2,432	42	1 3 2	2,626	45	1 3 2	525	58		
			Type 5	Y5VD	2,088	36	1 3 2	2,526	44	1 3 2	2,729	47	1 3 2				
			Type 2	Y2VD	1,410	37	1 3 2	1,706	45	1 3 2	1,842	48	1 3 2				
			Type 3	Y3VD	1,538	40	1 3 2	1,861	49	1 3 2	2,010	53	1 3 2				
			Type 4	Y4VD	1,463	39	1 3 2	1,770	47	1 3 2	1,912	50	1 3 2				
Diffused Lens	Type 5	Y5VD	1,520	40	1 3 2	1,839	48	1 3 2	1,986	52	1 3 2	350	38				

**ELECTRICAL CHARACTERISTICS**

Optical System	Ordering Code	Electrical Characteristics							Inrush Current				Dimming		
		LED Drive mA	System Watts	Amps AC		Min. Power Factor	Max THD (%)	Operating Temp. Range	120V		277V		Dimming Range	Source Current out of 0-10V Purple Wire	
				120	277				Ipeak (A)	T(@50% of Ipeak)	Ipeak (A)	T(@50% of Ipeak)			
YLED	32LED	525	525	58	0.5	0.2	0.9	20	-40°C to +55°C	21	160 μS	49	160 μS	10% to 100%	1 mA
		350	350	38	0.3	0.1									

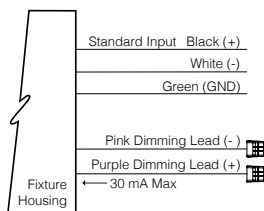
TM-21 Lifetime Calculation - Projected Lumen Maintenance								
Optical System	Ordering Code	Ambient Environment °C	25	50	TM-21 60	70	100	Reported L70
			YLED	32LED	15	97	96	
25	96	94			93	90	90	
40	94	91			90	86	86	

**LED COLOR**

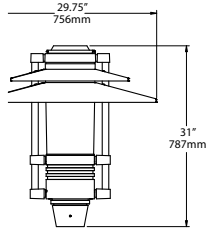
	Ordering Code		
	3K	4K	5K
CCT Average	3000K	4000K	5000K
CRI Minimum	≥ 80	≥ 70	≥ 70

**WIRING LEADS**

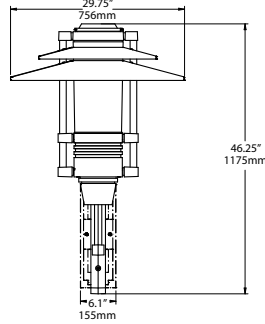
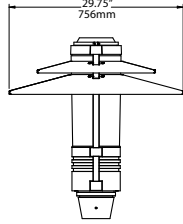
- Luminaires not configured with a control system or ANSI C136 receptacle option are provided with 0-10 purple and pink dimming leads



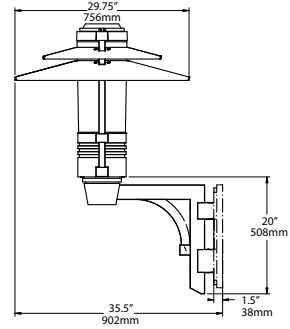
**DIMENSIONS**



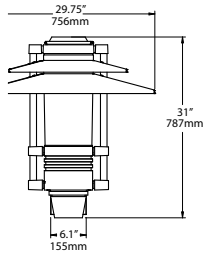
POST TOP  
WT: 49 lbs. EPA: 2.83



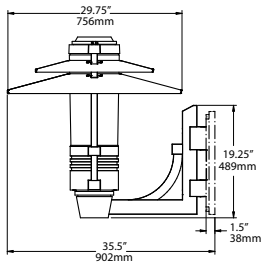
PSA-TU  
(Top of Arm Mounted Luminaire  
Upward Swept Arm Design)  
WT: 66 lbs. EPA: 3.36



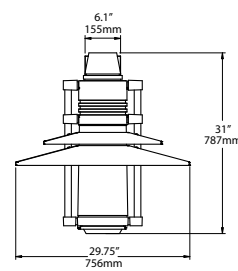
PSWM-TU  
(Top of Wall Mounted Luminaire  
Upward Swept Arm Design)  
WT: 70 lbs. EPA: 3.58



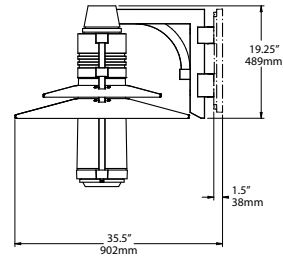
A-TD  
(Top of Arm Mounted Luminaire  
Downward Swept Arm Design)  
WT: 66 lbs. EPA: 3.36



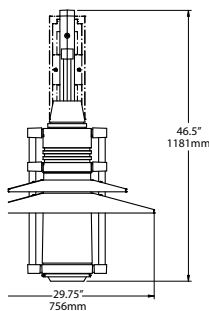
PSWM-TD  
(Top of Wall Mounted Luminaire  
Downward Swept Arm Design)  
WT: 70 lbs. EPA: 3.58



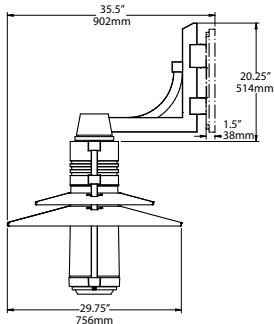
PSA-BU  
(Below Arm Mounted Luminaire  
Upward Swept Arm Design)  
WT: 66 lbs. EPA: 3.36



PSWM-BU  
(Below Wall Mounted Luminaire  
Upward Swept Arm Design)  
WT: 70 lbs. EPA: 3.58



A-BD  
(Below Arm Mounted Luminaire  
Downward Swept Arm Design)  
WT: 66 lbs. EPA: 3.36



PSWM-BD  
(Below Wall Mounted Luminaire  
Downward Swept Arm Design)  
WT: 70 lbs. EPA: 3.58

**Decorative Screens**



Painted to match fixture. \*Contact factory for custom designs.