

SPECIFICATIONS

CONSTRUCTION

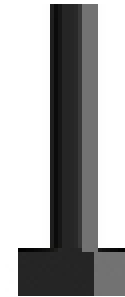
- Base shall be cast aluminum. Aluminum shall be certified as pure #356 alloy, free of any porosity, foreign materials, or cosmetic fillers. Base casting shall be heat treated to a T-6 condition, and of uniform wall thickness, with no warping or mold shifting
- Minimum wall thickness shall be .375". The base shall have cast in place gussets and an internal sleeve to accept the pole shaft. The anchor bolt locations in the base shall be cast in place, as part of the base casting, for maximum strength. The base cover shall be one piece heavy spun aluminum
- SHAFT: Pole shaft shall be seamless extruded 6061-T6 aluminum. Pole shaft shall be seated into the base sleeve and circumferentially welded around the outside of the base and internally where the pole is seated into the base casting. Reinforced 2" x 4" hand hole opening shall be flush with the outside of the pole.
- The aluminum hand hole cover shall be gasketed and secured with two tamper proof, stainless steel screws. Ground lug located same side as cover
- FINISH: Pole finish shall consist of standard AAL finish
- ANCHOR BOLTS: Anchor bolts shall be hot dip galvanized steel. Eight galvanized hex nuts and flat washers, and a bolt circle template shall be provided. Anchor bolts are 1" x 36" x 4"

WARNINGS

- Fixture must be grounded in accordance with local codes or the National Electric Code. Failure to do so may result in serious personal injury

CAUTION

- Poles should never be erected without the luminaire installed.
- Poles should never be erected without the luminaire installed. Warranty is voided if the pole is erected without the luminaire. The warranty is voided if the pole is not grouted under the entire base after installation



ORDERING GUIDE

Example: PR5-4S10-188-12' (3.7m)-BLT-GFI

CATALOG #

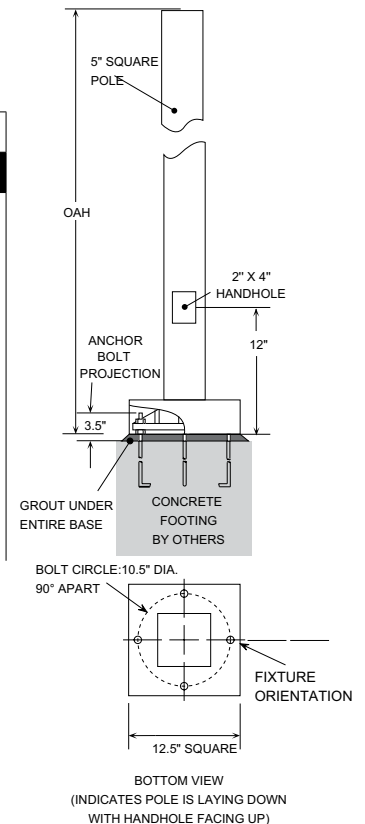
SERIES

Base	Pole	OAH	Color	Options
PS5 5" Square Pole	5S10-188	5S10-188	10' (3.1m)	10' (3.1m)
	5S12-188	5S12-188	12' (3.7m)	12' (3.7m)
	5S14-188	5S14-188	14' (4.3m)	14' (4.3m)
	5S16-188	5S16-188	16' (4.9m)	16' (4.9m)
	5S18-188	5S18-188	18' (5.5m)	18' (5.5m)
	5S20-188	5S20-188	20' (6.2m)	20' (6.2m)
			BLS Black Gloss Smooth	FS1 Single weatherproof fuse holder. Fuse by others.
			BLT Black Matte Textured	GFI FGCI duplex receptacle with cast base welded to pole and clear polycarbonate cover per NEC code.
			DBS Dark Bronze Gloss Smooth	DRB Duplex receptacle with cast base welded to pole and clear polycarbonate cover per NEC code.
			DBT Dark Bronze Matte Textured	PHC Button type photocell and cast shield.
			GTT Graphite Matte Textured	
			LGS Light Grey Gloss Smooth	
			LGT Light Grey Matte Textured	
			PSS Platinum Silver Gloss Smooth	
			VGT Verde Green Matte Textured	
			WHS White Gloss Smooth	
			WHT White Matte Textured	
			Color Option	
			CC ¹ Custom Color	

Notes:

- 1 Consult factory for custom color, marine and corrosive finish

DIMENSIONS



Maximum Allowable EPA (MPH)					
SHAFT	WT	70	80	90	100
5" SQ x .188"	61	32.2	24.5	18.0	14.5
5" SQ x .188"	69	29.0	21.5	15.7	12.5
5" SQ x .188"	78	25.0	18.5	13.5	10.5
5" SQ x .188"	86	21.7	15.7	11.3	8.5
5" SQ x .188"	95	18.5	12.8	9.0	6.5
5" SQ x .188"	103	15.0	9.7	6.5	4.2