



# PG Series

ARCHITECTURAL EMERGENCY UNIT

DATE: \_\_\_\_\_ LOCATION: \_\_\_\_\_

TYPE: \_\_\_\_\_ PROJECT: \_\_\_\_\_

CATALOG #: \_\_\_\_\_

## FEATURES

- No heads to aim, no adjustments to make
- Includes Spectron® self-testing/self-diagnostic electronics standard
- Sturdy die-cast aluminum construction
- Time delay retransfer circuit
- Brownout detection circuit
- Low Voltage Battery Disconnect
- Universal 120/277 VAC operation
- 90 minute emergency operation
- Microprocessor controlled battery environmental chamber
- Fast, easy installation

## PG Series



## SERVICE PROGRAMS



## SPECIFICATIONS

### APPLICATION

- PG is an indoor/outdoor, die-cast architectural emergency unit
- Wet location listed, emergency luminaire with high-output LED technology that provides path of egress illumination for mounting over entrance/exit ways and perimeter walkways
- Spectron® self-testing/self-diagnostic electronics are included standard
- A battery heater for cold temperature operation is available as an option

### CONSTRUCTION

- Housing and mounting plate are constructed of 1/8" die-cast aluminum
- Mounting plate also includes a 1/8" closed-cell, medium density, neoprene gasket for watertight seal
- Acrylic lens allows 92% light transmission. The reflector is electro-polished aluminum with 95% reflectance
- Housing finish is powder coated electro-deposition paint available in four colors: dark bronze, white, platinum silver and black

### INSTALLATION

- Universal housing knockouts for mounting to standard 3-1/2" and 4" octagon and 4" square electrical boxes
- A 1/2" – 1/4 NPT threaded conduit opening is provided at the top of the housing and sealed with a closure plug
- Back plate mounts to the wall surface using installer supplied hardware
- Housing "snaps" to the back plate by a "pin and socket" arrangement, and is secured with two #8-32 screws
- AC Lockout feature prevents battery discharge prior to initial unit power-up, saving installation time

### COMPLIANCES

- UL 924 Listed
- UL Wet Location Listed
- NFPA 101 Life Safety Code
- NFPA 70 National Electrical Code
- OSHA
- U.S. Patent No. D627,916

### WARRANTY

- LED Lifetime Warranty
- Fixture: 5 Years Full
- Battery: 2 Years Full, 8 Years Pro Rata



# PG Series

ARCHITECTURAL EMERGENCY UNIT

DATE: \_\_\_\_\_ LOCATION: \_\_\_\_\_

TYPE: \_\_\_\_\_ PROJECT: \_\_\_\_\_

CATALOG #: \_\_\_\_\_

## ORDERING GUIDE

Example: PGW

CATALOG #

PG		Options	
Model	Finish		
PG Architectural Emergency Unit	<b>W</b> White <b>Z</b> Dark Bronze <b>P</b> Platinum Silver <b>B</b> Black	<b>HTR</b> Battery Heater	

## ELECTRONICS

Upon failure of normal utility power, a solid-state transfer switch automatically activates the emergency function. Upon resumption of normal utility power, the battery is disconnected from the load and recharged through a solid-state charging unit. A low voltage battery disconnect feature protects the battery from severe damage during prolonged power failures. Spectron® self-testing/self-diagnostic circuitry provides automatic system testing on a monthly and semi-annual basis. Manual testing is available at any time using the push-to-test button: push once for a 60-second system test; push twice for a 90-minute system test.

**Number of Lamps:** Four high output LEDs

**Lamp Configuration:** Two sets of 2 LEDs provide illumination. In the unlikely event that any single LED should fail, the remaining LEDs will continue to function.

**Lamp Type:** Solid state high output LEDs

**Lamp Color:** Cool White, 6350K

**Total Lamp Output:** 405 Lumens

**Input:** 120/277VAC, 60 Hz

**Battery Charger:** Temperature compensating, constant current

Transfer: Solid state

**Functional Circuitry:** AC lockout, transformer isolation, transient surge protection, low voltage battery disconnect, brownout detection, time delay retransfer

**Battery Recharge Cycle:** per UL time standards

**Test Means:** Integral test switch

**Battery:** Sealed, maintenance-free Nickel-Cadmium

**Operating Temperature Range for Models without Heater:** 0°C to 50°C (32°F to 122°F)

**Operating Temperature Range for Models with Heater:** -30°C to 50°C (-22°F to 122°F)

**Weight:** 6.13 lbs (2.78 kg)  
6.42 lbs (2.91 kg) (with -HTR option)

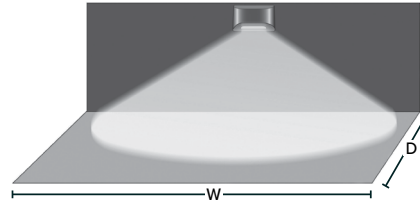
## POWER CONSUMPTION

PG	Models without Heater		Models with Heater	
	120VAC	277VAC	120VAC	277VAC
	2.78 Watts	2.88 Watts	15.2 Watts	15.7 Watts

Power factor, average: 0.8 (lagging)

## ILLUMINATION PATTERN

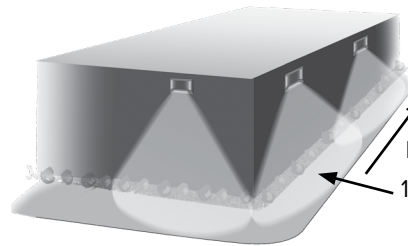
### SINGLE UNIT COVERAGE



Mounting Height: 9'  
Outdoor Reflectance: 0/30/10  
Indoor Reflectance: 80/50/20

	Indoor	Outdoor
1 FC Average (W x D)	33' X 10'	27' X 10'
1 FC Minimum (W x D)	10' X 10'	9' X 10'

### MULTIPLE UNIT SPACING



Mounting Height: 9'  
Illuminated Path Depth: 6'  
Outdoor Reflectance: 30/10  
Indoor Reflectance: 80/50/20

	Indoor	Outdoor
1 FC Average	44'	33'
1 FC Minimum	16'	15'

## DIMENSIONS

