

ARFX16

ARCHETYPE® X FLOOD LUMINAIRE

DATE: _____ LOCATION: _____
 TYPE: _____ PROJECT: _____
 CATALOG #: _____

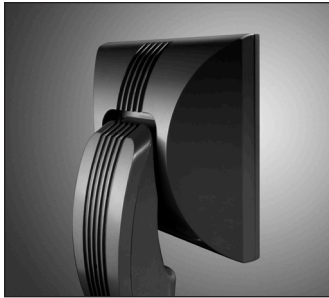
FEATURES

- Independently aimed LEAR™ modules
- 355° rotation and 70° tilt module adjustment and -5° to +30° housing adjustment
- Wide range of drive currents available
- Design software interface for user-defined Type X distribution creation
- Traditional NEMA distributions available
- IP66 sealed optical chamber

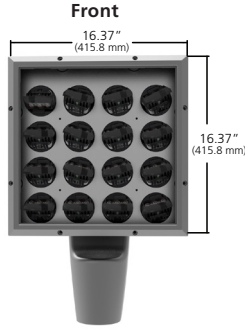
Certifications



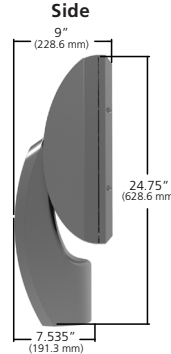
SPECIFICATIONS



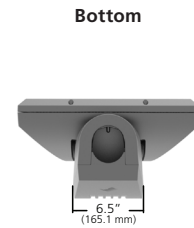
Max Weight = 51 lbs.



EPA 2.63



EPA 1.35



Bottom

EPA 0.87

ORDERING CODE

ARFX16								
Fixture	Distribution	Electrical Module			Fixture Finish	Photocell Options	Fuse Options	NFO Option
WF Wide Flood		<u>Color Temperature</u>	<u>Drive Current</u>	<u>Voltages</u>	LG Light Gray	A25-7H 7-pin Photocell Receptacle Horizontal ³	SF 120, 277, 347 Line Volts	NFO Neighbor Friendly Optic
VF Vertical Flood	3K 3000K	35 350mA	UV 120-277V	BL Black	A25-7V 7-pin Photocell Receptacle Vertical ³	DF 208, 240, 480 Line Volts		
MF Medium Flood	4K 4000K	40 400mA	347 347V	DB Dark Bronze	A30 120V Button Photocell			
NF Narrow Flood	5K 5000K	45 450mA	480 480V	GT Graphite	A31 208V Button Photocell			
X Type X ¹	Type X IES File Name	50 500mA		PS Platinum Silver	A32 240V Button Photocell			
		55 550mA		TT Titanium	A33 277V Button Photocell			
		60 600mA		WH White	A34 347V Button Photocell			
		65 650mA		CC Custom Color ²	A35 480V Button Photocell			
		70 700mA						
Control Options					Mounting Options			
<u>Wireless</u>		<u>Control Accessories</u>		<u>Motion</u>		SMT ⁶ Surface Mount Tenon		
WIR-RMI-IO 120 - 347V 1000 Foot Range WiScape RF mesh control system with off/on/dim, motion, photo, GPS location, alert, monitoring and metering capabilities.	WIR-RME-L wiSCAPE External Fixture Module	SCH-R Round Pole Mounted Occupancy Sensor up to 30'	SCH-S Square Pole Mounted Occupancy Sensor up to 30'	SM2 ⁶ Stanchion Mount Tenon			WM2 ⁶ Wall Mount Tenon	
					MTM-2B Twin Mount Tenon			MTM-3E Triple Mount Tenon

¹ User-defined distributions must include IES# file where indicated
² Custom colors subject to additional charges, minimum quantities and extended lead times. Consult representative.
³ Indicates mounting position of fixture.
⁶ Not for use with MTM-2B or MTM-3E options.

Microsoft, Encarta, MSN, and Windows are either registered trademarks or trademarks of Microsoft Corporation in the United States and/or other countries.

ARFX16

ARCHETYPE® X FLOOD LUMINAIRE

DATE: _____ LOCATION: _____

TYPE: _____ PROJECT: _____

CATALOG #: _____

Distribution Type	Photometrics (3000K)							
Field Angle - 10% max	Lumens							
	350 mA	400 mA	450 mA	500 mA	550 mA	600 mA	650 mA	700 mA
Wide Flood	10385	11431	12305	13323	14342	15372	16403	17433
Vertical Flood	11540	12702	13673	14804	15936	17081	18226	19371
Medium Flood	10887	11984	12900	13968	15035	16115	17196	18276
Narrow Flood	11503	12661	13629	14757	15885	17026	18168	19309

Distribution Type	Photometrics (4000K)							
Field Angle - 10% max	Lumens							
	350 mA	400 mA	450 mA	500 mA	550 mA	600 mA	650 mA	700 mA
Wide Flood	10975	12106	13306	14464	15621	16751	17882	19012
Vertical Flood	12721	14032	15423	16765	18107	19417	20727	22037
Medium Flood	12749	14063	15458	16802	18147	19460	20773	22086
Narrow Flood	13250	14616	16066	17463	18860	20225	21589	22954

Distribution Type	Photometrics (5000K)							
Field Angle - 10% max	Lumens							
	350 mA	400 mA	450 mA	500 mA	550 mA	600 mA	650 mA	700 mA
Wide Flood	11954	13442	14930	16418	17757	19097	20437	21777
Vertical Flood	12733	14318	15903	17488	18915	20343	21770	23197
Medium Flood	12110	13617	15125	16632	17990	19347	20705	22062
Narrow Flood	12867	14469	16070	17672	19114	20557	21999	23441

ELECTRICAL CHARACTERISTICS

Optical System	Electrical										Dimming						
	Current	System Watts	Line Voltage		Amps AC						Min. Power Factor	Max THD (%)	Dimming Range	Source current out of 0-10V purple wire		Absolute voltage range on 0-10V (+) purple wire	
			VAC	Hz	120	208	240	277	347	480				Min	Max	Min	Max
LEAR™	350 mA	110	120-480	50/60	0.92	0.53	0.46	0.40	0.32	0.23	>0.9	20	10% to 100%	0mA	1mA	0V	10V
	400 mA	124			1.03	0.60	0.52	0.45	0.36	0.26							
	450 mA	138			1.15	0.66	0.58	0.50	0.40	0.29							
	500 mA	152			1.27	0.73	0.63	0.55	0.44	0.32							
	550 mA	167			1.39	0.80	0.70	0.60	0.48	0.35							
	600 mA	182			1.52	0.88	0.76	0.66	0.52	0.38							
	650 mA	196			1.63	0.94	0.82	0.71	0.56	0.41							
	700 mA	211			1.76	1.01	0.88	0.76	0.61	0.44							

TM-21 LIFETIME CALCULATION

Optical System	Ambient Environment °C	Projected Lumen Maintenance				Reported L70
		16	26	TM-21 60	100	
LEAR™	25	97.55%	96.37%	92.45%	88.05%	> 36,000 hrs

LED COLOR

	Spectroradiometric		
	3K	4K	5K
Designation	3000K	4000K	5000K
CRI Minimum	≥72	≥72	≥72
S/P Ratio	1.33	1.66	1.78

Consult factory for Amber, Turtle Friendly, Gulf Coast and Observatory applications.

ARFX16

ARCHETYPE® X FLOOD LUMINAIRE

DATE:	LOCATION:
TYPE:	PROJECT:
CATALOG #:	

SPECIFICATIONS

Housing:

- Low copper aluminum alloy die-casting designed as one-piece with external cooling ribs.
- Solid cast aluminum walls between the housing and arm create a thermal barrier between the optical and electrical compartments.
- Molded silicone gaskets throughout to insure sealing between the two compartments and ingress protection.
- Housing designed with integral Type X thermal transfer “turrets” utilized for both thermal transfer and to secure location of the LEAR™ Optical Module. The turrets are spaced in rows of 4 X 4, designed to optimize photometric performance for standard and Type X user-defined distributions.
- Tempered UV coated flat lens for low glare.
- IK09 rated enclosure protects electrical equipment against external mechanical impacts.

Lens Frame:

- One-piece, die-cast, low copper aluminum alloy secured to housing with eight captive, tamper-resistant stainless steel fasteners.
- Molded silicone gasket assembles into a cast channel in the doorframe sealing the 3/16” thick low iron-content, tempered glass lens against the housing upon closure.
- IP66 certified to protect the interior components from dust and water ingress.

Type X LEAR™ Optical Module:

- Turret alignment and thermal transfer design allow for freedom of adjustability and precision of the LEAR LED array.
- Optimized standard distribution or user-defined beam patterns.
- 3000K, 4000K, 5000K standard CCT. Amber and other custom color temperatures available.
- Factory adjusted distributions created from user-defined IES files.
- Toolless 355° rotation adjustment and 70° tilt adjustment with a tamper resistant fastener.
- Type X LEAR modules are IP66 rated and utilize six high output LEDs, positioned beneath a precision, high purity molded acrylic prism.

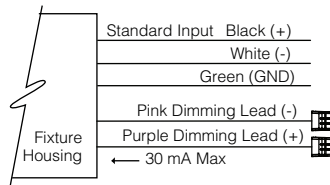
- Targeted optics minimize pixilation concerns to provide outstanding performance, uniformity and glare control.

Electrical Components:

- Standard programmable driver for variable drive current settings from 350mA to 700mA.
- Electrical components are located in the arm. Molded silicon gasket seal to isolate arm from the optical chamber.
- Maximum lightning surge current 20KA with thermally protected varistor technology. Surge suppression is series circuited preventing total fixture failure.
- Open circuit fault will turn off the luminaire protecting the sensitive electronics and acting as a signal for maintenance.
- Programmable Driver is rated for -40°F starting.
- “Thermal Shield” Primary Side thermister Protection for sustainable life of LEAR modules and electronic components.

Dimming:

- Dimming range from 10% to 100% by the use of its standard 0-10V interface on the programmable driver.
- Modular wiring harness in the service area provided for user access to the dimming circuitry.
- Dimming circuitry compatible with 0-10V user-defined control devices.
- Optional factory programmed dimming profile.



Arm:

- Low copper aluminum alloy, two piece die-casting designed and gasketed to function as one-piece.
- External cooling ribs create continuous aesthetic and thermal path.
- Molded silicone gasket seals the wiring channel separating the arm from the housing thermally insulating the electronic components.

- Internally accessible slip-fitter provided. Attaches to a 1-1/4” to 2-3/8” tenon.
- Luminaire housing adjustable +30° and -5 via locking fastener under the arm cover.

Finish:

- Fade and abrasion resistant, electrostatically applied, thermally cured, triglycidal isocyanurate (TGIC) polyester powdercoat.
- Standard colors include (BL) Black, (DB) Dark Bronze, (GT) Graphite, (PS) Platinum Silver, (LG) Light Gray, (TT) Titanium, (WH) White, and (CC) Custom Color (Include RAL#).

Fuse Options:

- SF** for 120, 277 and 347 Line Volts
- DF** for 208, 240 and 480 Line Volts.
- High temperature fuse holders factory installed inside the fixture arm. Fuse is included.

Certifications and Listings:

- UL 1598 Standard for Luminaires.
- UL 8750 Standard for Safety for Light Emitting Diode (LED) Equipment for use in Lighting Products.
- CSA C22.2#250.0 Luminaires.
- ANSI C136.31-2010 3G Vibration tested and compliant.
- RoHS compliant.
- IP66 certified.
- IEC 66262 Mechanical Impact Code IK09.

CAUTION:

- Fixtures must be grounded in accordance with national, state and/or local electrical codes, Failure to do so may result in serious personal injury.

ARFX16

ARCHETYPE® X FLOOD LUMINAIRE
CONTROLS

DATE:	LOCATION:
TYPE:	PROJECT:
CATALOG #:	

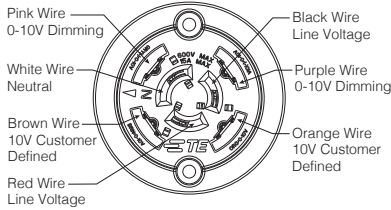
Photocell Receptacle

A25-7H or A25-7V

Fully gasketed and wired 7-pin receptacle standard. Easy access location above the electrical compartment. 7-pin construction allows user-defined interface and control definition of operational performance. ANSI twist-lock control module by-others. H (Horizontal) or V (Vertical) indicates mounting position of fixture.

Standard customer operation modes:

1. Traditional on/off photoelectric control.
2. 5-pin wireless photoelectric control for added dimming feature.
3. 7-pin wireless photoelectric control for dimming and additional I/O connections for customer use.



Button Photocell

A30 for 120V, **A31** for 208V, **A32** for 240V, **A33** for 277V, **A35** for 347V, **A34** for 480V,

Factory installed photocell inside housing with a fully gasketed sensor on the side wall. For multiple fixture mountings, one fixture is supplied with a photocell to operate the others.

Wireless Controls

wiSCAPE™

wiSCAPE™ wireless control modules allow an individual fixture to managed, monitored and measured. The modules communicate securely over a robust certified meshed radio signal. The wiSCAPE modules provide on/off/dim control, external device input, alerts and metering.

WIR-RMI-IO

wiSCAPE Internal Module, 120-480V, 1000ft range (LOS), 3 Digital Inputs/1 Analog Input, 2 Outputs.

WIR-RME-L

wiSCAPE External Module, 120-480V, 1000ft range (LOS), Internal Photocell, 1 Digital Input, Compatible with the A-25-7H option

Pole Mounted

Round Pole-Mounted Occupancy Sensor up to 16'

SCL-R

Round Pole-Mounted Occupancy Sensor up to 16' - an outdoor occupancy sensor with 0-10V interface dimming control that mounts directly to the pole. Wide 360° pattern. Module colors are available in Black, Gray, and White. Module is cut for round pole mounting. Pole diameter is needed upon order. Poles to be drilled in the field will be provided with installation instructions.

Ordering Example: SCL-R4²/277³/BL⁴

Square Pole-Mounted Occupancy Sensor up to 16'

SCL-S

Square Pole-Mounted Occupancy Sensor up to 16' - an outdoor occupancy sensor with 0-10V interface dimming control that mounts directly to the pole. Wide 360° pattern. Module colors are available in Black, Gray, and White. Module is cut for square pole mounting. Pole diameter is needed upon order. Poles to be drilled in the field will be provided with installation instructions.

Ordering Example: SCL-L/277³/BL⁴

Round Pole-Mounted Occupancy Sensor 16' to 30'

SCH-R

Round Pole-Mounted Occupancy Sensor: 16' to 30' - an outdoor occupancy sensor with 0-10V interface dimming control that mounts directly to the pole. Wide 360° pattern. Module colors are available in Black, Gray, and White. Module is cut for round pole mounting. Pole diameter is needed upon order. Poles to be drilled in the field will be provided with installation instructions.

Ordering Example: SCH-R4²/277³/BL⁴

Square Pole-Mounted Occupancy Sensor 16' to 30'

SCH-S

Square Pole-Mounted Occupancy Sensor: 16 to 30' - an outdoor occupancy sensor with 0-10V interface dimming control that mounts directly to the pole. Wide 360° pattern. Module colors are available in Black, Gray, and White. Module is cut for round pole mounting. Pole diameter is needed upon order. Poles to be drilled in the field will be provided with installation instructions.

Ordering Example: SCH-S/277³/BL⁴

SCP

The SCP is a photo-control with motion sensing accessory that mounts to the side of any new or existing 3"-5" round or square straight pole. The SCP enables any pole mounted luminaire in excess of 75 watts, to meet California Title 24 requirements with integral 20KV/10KA surge protection for added reliability and serviceability.

²Voltage, ³Color, ⁴Pole Diameter,

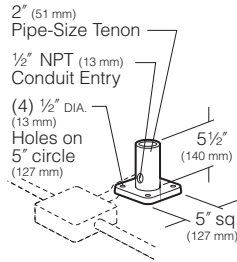
ARFX16

ARCHETYPE® X FLOOD LUMINAIRE
MOUNTING OPTIONS

DATE:	LOCATION:
TYPE:	PROJECT:
CATALOG #:	

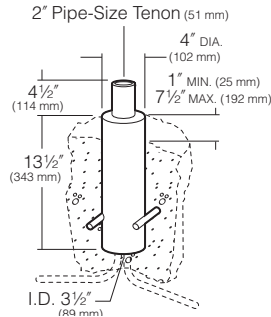
**Surface Mount Tenon
SMT/BL**

2" pipe-size tenon (2-3/8" O.D., 2" I.D.).
Welded to a cast aluminum plate. Plate has four 1/2" mounting holes, and tenon has one 1/2" NPT for side conduit entry. Black finish.



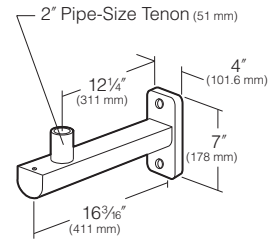
**Stanchion Mount Tenon
SM2/BL**

2" tenon. 4" O.D. cast low copper (<0.6% Cu) aluminum stanchion with 2" pipe-size tenon (2-3/8" O.D., 1-3/8" I.D.) for mounting a single fixture or multiple top-mounts. Black finish.



**Wall Mount Tenon
WM2/BL, WM2/DB, WM2/LG, WM2/SG,
WM2/PS, WM2/WH**

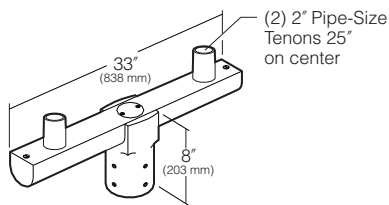
2" pipe-size tenon (2-3/8" O.D., 2" I.D.).
Welded to an extruded aluminum arm with a removable end cap for wiring access. Arm is welded to a cast aluminum plate with two 1/2" mounting holes.



**Twin Mount Tenon
MTM-2B/BL, MTM-2B/DB, MTM-2B/LG,
MTM-2B/SG, MTM-2B/PS, MTM-2B/WH**

Extruded aluminum support continuously welded to a heavy cast aluminum slipfitter hub which cradles the arm for strength. The slipfitter hub contains four recessed 3/8" stainless steel allen head set point screws for mounting to steel pole with steel 2" pipe size tenon (2-3/8" O.D. x 4-1/4"). Cast aluminum end caps and center cap provide access to field splice connections.

CAUTION: Approved for mounting to poles with steel tenons only.



**Triple Mount Tenon
MTM-3E/BL, MTM-3E/DB, MTM-3E/LG,
MTM-3E/SG, MTM-3E/PS, MTM-3E/WH**

Extruded aluminum support continuously welded to a heavy cast aluminum slipfitter hub which cradles the arm for strength. The slipfitter hub contains four recessed 3/8" stainless steel allen head set point screws for mounting to steel pole with steel 2" pipe size tenon (2-3/8" O.D. x 4-1/4"). Cast aluminum end caps and center cap provide access to field splice connections.

CAUTION: Approved for mounting to poles with steel tenons only.

