

ARFX16SP

ARCHETYPE® X FLOOD LUMINAIRE - SPOT

DATE: _____ LOCATION: _____
 TYPE: _____ PROJECT: _____
 CATALOG #: _____

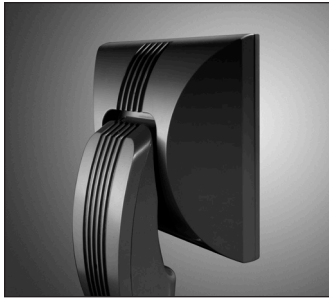
FEATURES

- Independently aimed LEAR™ modules
- 355° rotation and 70° tilt module adjustment and -5° to +30° housing adjustment
- Wide range of drive currents available
- Design software interface for user-defined Type X distribution creation
- Traditional NEMA distributions available
- IP66 sealed optical chamber

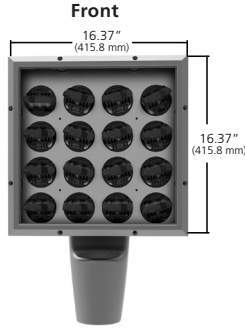
Certifications



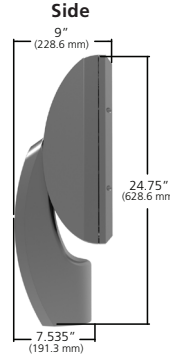
SPECIFICATIONS



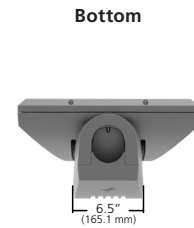
Max Weight = 51 lbs.



EPA 2.63



EPA 1.35



Bottom

EPA 0.87

ORDERING CODE

ARFX16								
Fixture	Distribution	Electrical Module			Fixture Finish	Photocell Options	Fuse Options	
	SP Spot X Type X ¹	<u>Color Temperature</u> 3K 3000K 4K 4000K 5K 5000K	<u>Drive Current</u> 35 350mA 65 650mA 40 400mA 70 700mA 45 450mA 75 750mA 50 500mA 80 800mA 55 550mA 85 850mA 60 600mA 90 900mA		<u>Voltages</u> UV 120-277V 347 347V 480 480V	LG Light Gray BL Black DB Dark Bronze GT Graphite PS Platinum Silver TT Titanium WH White CC Custom Color ²	A25-7H 7-pin Photocell Receptacle Horizontal ³ A25-7V 7-pin Photocell Receptacle Vertical ³ A30 120V Button Photocell A31 208V Button Photocell A32 240V Button Photocell A33 277V Button Photocell A34 480V Button Photocell A35 347V Button Photocell	SF 120, 277, 347 Line Volts DF 208, 240, 480 Line Volts
	Type X IES File Name							
NFO Option	Control Options			Motion		Mounting Options		
NFO Neighbor Friendly Optic	<u>Wireless</u> WIR-RMI-IO 120 - 347V 1000 Foot Range WiScape RF mesh control system with off/on/dim, motion, photo, GPS location, alert, monitoring and metering capabilities.	<u>Control Accessories</u> WIR-RME-L wiSCAPE External Fixture Module		<u>Motion</u> SCL-R Round Pole Mounted Occupancy Sensor up to 16' SCL-S Square Pole Mounted Occupancy Sensor up to 16' SCH-R Round Pole Mounted Occupancy Sensor 16' to 30' SCH-S Square Pole Mounted Occupancy Sensor 16' to 30'		SMT ⁶ Surface Mount Tenon SM2 ⁶ Stanchion Mount Tenon WM2 ⁶ Wall Mount Tenon MTM-2B Twin Mount Tenon MTM-3E Triple Mount Tenon		

Microsoft, Encarta, MSN, and Windows are either registered trademarks or trademarks of Microsoft Corporation in the United States and/or other countries.

¹ User-defined distributions must include IES# file where indicated
² Custom colors subject to additional charges, minimum quantities and extended lead times. Consult representative.
³ Indicates mounting position of fixture.
⁶ Not for use with MTM-2B or MTM-3E options.

ARFX16SP

ARCHETYPE® X FLOOD LUMINAIRE - SPOT

DATE: _____ LOCATION: _____

TYPE: _____ PROJECT: _____

CATALOG #: _____

Color Temp Field Angle - 10% max	Photometrics (3000K)											
	350 mA	400 mA	450 mA	500 mA	550 mA	600 mA	650 mA	700 mA	750 mA	800 mA	850 mA	900 mA
Drive Current	350 mA	400 mA	450 mA	500 mA	550 mA	600 mA	650 mA	700 mA	750 mA	800 mA	850 mA	900 mA
Lumens	2844	3075	3306	3537	3768	3903	4039	4174	4309	4444	4580	4715
Maximum Candela	50012	54074	58136	62198	66260	68634	71037	73405	75790	78158	80545	82930
Maximum Candela Angle H	0	0	0	0	0	0	0	0	0	0	0	0
Maximum Candela Angle V	47.5	47.5	47.5	47.5	47.5	47.5	47.5	47.5	47.5	47.5	47.5	47.5
Horizontal Beam Angle (50%)	10.5	10.5	10.5	10.5	10.5	10.5	10.5	10.5	10.5	10.5	10.5	10.5
Vertical Beam Angle (50%)	12.2	12.2	12.2	12.2	12.2	12.2	12.2	12.2	12.2	12.2	12.2	12.2

Color Temp Field Angle - 10% max	Photometrics (4000K)											
	350 mA	400 mA	450 mA	500 mA	550 mA	600 mA	650 mA	700 mA	750 mA	800 mA	850 mA	900 mA
Drive Current	350 mA	400 mA	450 mA	500 mA	550 mA	600 mA	650 mA	700 mA	750 mA	800 mA	850 mA	900 mA
Lumens	3874	4216	4558	4900	5242	5488	5735	5981	6227	6473	6720	6966
Maximum Candela	77960	84842	91725	98607	105490	110440	115411	120361	125312	130262	135233	140183
Maximum Candela Angle H	0	0	0	0	0	0	0	0	0	0	0	0
Maximum Candela Angle V	47.5	47.5	47.5	47.5	47.5	47.5	47.5	47.5	47.5	47.5	47.5	47.5
Horizontal Beam Angle (50%)	9.1	9.1	9.1	9.1	9.1	9.1	9.1	9.1	9.1	9.1	9.1	9.1
Vertical Beam Angle (50%)	11.1	11.1	11.1	11.1	11.1	11.1	11.1	11.1	11.1	11.1	11.1	11.1

Color Temp Field Angle - 10% max	Photometrics (5000K)											
	350 mA	400 mA	450 mA	500 mA	550 mA	600 mA	650 mA	700 mA	750 mA	800 mA	850 mA	900 mA
Drive Current	350 mA	400 mA	450 mA	500 mA	550 mA	600 mA	650 mA	700 mA	750 mA	800 mA	850 mA	900 mA
Lumens	4261	4638	5014	5390	5766	6037	6308	6579	6850	7121	7392	7662
Maximum Candela	85748	93348	100909	108469	116120	112386	117425	122465	127522	132561	137618	142656
Maximum Candela Angle H	0	0	0	0	0	0	0	0	0	0	0	0
Maximum Candela Angle V	47.5	47.5	47.5	47.5	47.5	47.5	47.5	47.5	47.5	47.5	47.5	47.5
Horizontal Beam Angle (50%)	9.1	9.1	9.1	9.1	9.1	9.8	9.8	9.8	9.8	9.8	9.8	9.8
Vertical Beam Angle (50%)	11.1	11.1	11.1	11.1	11.2	11.9	11.9	11.9	11.9	11.9	11.9	11.9

Optical System	Electrical										Dimming						
	Current	System Watts	Line Voltage		Amps AC						Min. Power Factor	Max THD (%)	Dimming Range	Source current out of 0-10V purple wire		Absolute voltage range on 0-10V (+) purple wire	
			VAC	Hz	120	208	240	277	347	480				Min	Max	Min	Max
LEAR™	350 mA	60	120-480	50/60	0.50	0.29	0.25	0.22	0.17	0.12	>0.9	20	10% to 100%	0mA	1mA	0V	10V
	400 mA	68			0.57	0.33	0.28	0.25	0.20	0.14							
	450 mA	75			0.63	0.36	0.31	0.27	0.22	0.16							
	500 mA	85			0.71	0.41	0.35	0.31	0.24	0.18							
	550 mA	92			0.77	0.44	0.38	0.33	0.27	0.19							
	600 mA	102			0.85	0.49	0.43	0.37	0.30	0.21							
	650 mA	111			0.92	0.53	0.46	0.40	0.32	0.23							
	700 mA	120			1.00	0.57	0.50	0.43	0.34	0.25							
	750 mA	128			1.07	0.62	0.53	0.46	0.37	0.27							
	800 mA	137			1.14	0.66	0.57	0.49	0.39	0.28							
	850 mA	145			1.21	0.70	0.60	0.52	0.42	0.30							
900 mA	154	1.28	0.74	0.64	0.55	0.44	0.32										

TM-21 LIFETIME CALCULATION*

Optical System	Ambient Environment °C	Projected Lumen Maintenance			Reported L70
		16	26	TM-21 48	
LEAR™	25	91.12%	85.65%	74.75%	> 48,000 hrs

*Projected lifetime from 700mA LM-80 data.

LED COLOR

Designation	Spectroradiometric		
	3K	4K	5K
3000K	3000K	4000K	5000K
CRI Minimum	≥72	≥72	≥72
S/P Ratio	1.33	1.66	1.78

Consult factory for Amber, Turtle Friendly, Gulf Coast and Observatory applications.

ARFX16SP

ARCHETYPE® X FLOOD LUMINAIRE - SPOT

DATE:	LOCATION:
TYPE:	PROJECT:
CATALOG #:	

SPECIFICATIONS

Housing:

- Low copper aluminum alloy die-casting designed as one-piece with external cooling ribs.
- Solid cast aluminum walls between the housing and arm create a thermal barrier between the optical and electrical compartments.
- Molded silicone gaskets throughout to insure sealing between the two compartments and ingress protection.
- Housing designed with integral Type X thermal transfer “turrets” utilized for both thermal transfer and to secure location of the LEAR™ Optical Module. The turrets are spaced in rows of 4 X 4, designed to optimize photometric performance for standard and Type X user-defined distributions.
- Tempered UV coated flat lens for low glare.
- IK09 rated enclosure protects electrical equipment against external mechanical impacts.

Lens Frame:

- One-piece, die-cast, low copper aluminum alloy secured to housing with eight captive, tamper-resistant stainless steel fasteners.
- Molded silicone gasket assembles into a cast channel in the doorframe sealing the 3/16” thick low iron-content, tempered glass lens against the housing upon closure.
- IP66 certified to protect the interior components from dust and water ingress.

Type X LEAR™ Optical Module:

- Turret alignment and thermal transfer design allow for freedom of adjustability and precision of the LEAR LED array.
- Optimized standard distribution or user-defined beam patterns.
- 3000K, 4000K, 5000K standard CCT. Amber and other custom color temperatures available.
- Factory adjusted distributions created from user-defined IES files.
- Toolless 355° rotation adjustment and 70° tilt adjustment with a tamper resistant fastener.
- Type X LEAR modules are IP66 rated and utilize six high output LEDs, positioned beneath a precision, high purity molded acrylic prism.

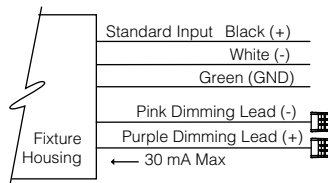
- Targeted optics minimize pixilation concerns to provide outstanding performance, uniformity and glare control.

Electrical Components:

- Standard programmable driver for variable drive current settings from 350mA to 900mA.
- Electrical components are located in the arm. Molded silicon gasket seal to isolate arm from the optical chamber.
- Maximum lightning surge current 20KA with thermally protected varistor technology. Surge suppression is series circuited preventing total fixture failure.
- Open circuit fault will turn off the luminaire protecting the sensitive electronics and acting as a signal for maintenance.
- Programmable Driver is rated for -40°F starting.
- “Thermal Shield” Primary Side thermister Protection for sustainable life of LEAR modules and electronic components.

Dimming:

- Dimming range from 10% to 100% by the use of its standard 0-10V interface on the programmable driver.
- Modular wiring harness in the service area provided for user access to the dimming circuitry.
- Dimming circuitry compatible with 0-10V user-defined control devices.
- Optional factory programmed dimming profile.



Arm:

- Low copper aluminum alloy, two piece die-casting designed and gasketed to function as one-piece.
- External cooling ribs create continuous aesthetic and thermal path.
- Molded silicone gasket seals the wiring channel separating the arm from the housing thermally insulating the electronic components.

- Internally accessible slip-fitter provided. Attaches to a 1-1/4” to 2-3/8” tenon.
- Luminaire housing adjustable +30° and -5 via locking fastener under the arm cover.

Finish:

- Fade and abrasion resistant, electrostatically applied, thermally cured, triglycidal isocyanurate (TGIC) polyester powdercoat.
- Standard colors include (BL) Black, (DB) Dark Bronze, (GT) Graphite, (PS) Platinum Silver, (LG) Light Gray, (TT) Titanium, (WH) White, and (CC) Custom Color (Include RAL#).

Fuse Options:

SF for 120, 277 and 347 Line Volts
DF for 208, 240 and 480 Line Volts

- High temperature fuse holders factory installed inside the fixture arm. Fuse is included.

Certifications and Listings:

- UL 1598 Standard for Luminaires.
- UL 8750 Standard for Safety for Light Emitting Diode (LED) Equipment for use in Lighting Products.
- CSA C22.2#250.0 Luminaires.
- ANSI C136.31-2010 3G Vibration tested and compliant.
- RoHS compliant.
- IP66 certified.
- IEC 66262 Mechanical Impact Code IK09.

CAUTION:

- Fixtures must be grounded in accordance with national, state and/or local electrical codes, Failure to do so may result in serious personal injury.

ARFX16SP

ARCHETYPE® X FLOOD LUMINAIRE - SPOT CONTROLS

DATE:	LOCATION:
TYPE:	PROJECT:
CATALOG #:	

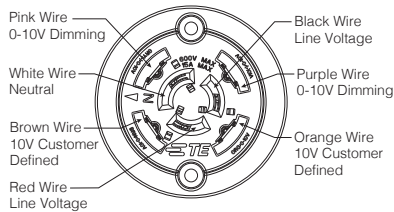
Photocell Receptacle

A25-7H or A25-7V

Fully gasketed and wired 7-pin receptacle standard. Easy access location above the electrical compartment. 7-pin construction allows user-defined interface and control definition of operational performance. ANSI twist-lock control module by-others. H (Horizontal) or V (Vertical) indicates mounting position of fixture.

Standard customer operation modes:

1. Traditional on/off photoelectric control.
2. 5-pin wireless photoelectric control for added dimming feature.
3. 7-pin wireless photoelectric control for dimming and additional I/O connections for customer use.



Button Photocell

A30 for 120V, **A31** for 208V, **A32** for 240V, **A33** for 277V, **A35** for 347V, **A34** for 480V,

Factory installed photocell inside housing with a fully gasketed sensor on the side wall. For multiple fixture mountings, one fixture is supplied with a photocell to operate the others.

Wireless Controls

wiSCAPE™

wiSCAPE™ wireless control modules allow an individual fixture to managed, monitored and measured. The modules communicate securely over a robust certified meshed radio signal. The wiSCAPE modules provide on/off/dim control, external device input, alerts and metering.

WIR-RMI-IO

wiSCAPE Internal Module, 120-480V, 1000ft range (LOS), 3 Digital Inputs/1 Analog Input, 2 Outputs.

WIR-RME-L

wiSCAPE External Module, 120-480V, 1000ft range (LOS), Internal Photocell, 1 Digital Input, Compatible with the A-25-7H option

Pole Mounted

Round Pole-Mounted Occupancy Sensor up to 16'

SCL-R

Round Pole-Mounted Occupancy Sensor up to 16' - an outdoor occupancy sensor with 0-10V interface dimming control that mounts directly to the pole. Wide 360° pattern. Module colors are available in Black, Gray, and White. Module is cut for round pole mounting. Pole diameter is needed upon order. Poles to be drilled in the field will be provided with installation instructions.

Ordering Example: SCL-R4²/277³/BL⁴

Square Pole-Mounted Occupancy Sensor up to 16'

SCL-S

Square Pole-Mounted Occupancy Sensor up to 16' - an outdoor occupancy sensor with 0-10V interface dimming control that mounts directly to the pole. Wide 360° pattern. Module colors are available in Black, Gray, and White. Module is cut for square pole mounting. Pole diameter is needed upon order. Poles to be drilled in the field will be provided with installation instructions.

Ordering Example: SCL-L/277³/BL⁴

Round Pole-Mounted Occupancy Sensor 16' to 30'

SCH-R

Round Pole-Mounted Occupancy Sensor: 16' to 30' - an outdoor occupancy sensor with 0-10V interface dimming control that mounts directly to the pole. Wide 360° pattern. Module colors are available in Black, Gray, and White. Module is cut for round pole mounting. Pole diameter is needed upon order. Poles to be drilled in the field will be provided with installation instructions.

Ordering Example: SCH-R4²/277³/BL⁴

Square Pole-Mounted Occupancy Sensor 16' to 30'

SCH-S

Square Pole-Mounted Occupancy Sensor: 16 to 30' - an outdoor occupancy sensor with 0-10V interface dimming control that mounts directly to the pole. Wide 360° pattern. Module colors are available in Black, Gray, and White. Module is cut for round pole mounting. Pole diameter is needed upon order. Poles to be drilled in the field will be provided with installation instructions.

Ordering Example: SCH-S/277³/BL⁴

SCP

The SCP is a photo-control with motion sensing accessory that mounts to the side of any new or existing 3"-5" round or square straight pole. The SCP enables any pole mounted luminaire in excess of 75 watts, to meet California Title 24 requirements with integral 20KV/10KA surge protection for added reliability and serviceability.

²Voltage, ³Color, ⁴Pole Diameter,

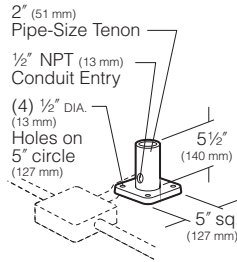
ARFX16SP

ARCHETYPE® X FLOOD LUMINAIRE - SPOT
MOUNTING OPTIONS

DATE:	LOCATION:
TYPE:	PROJECT:
CATALOG #:	

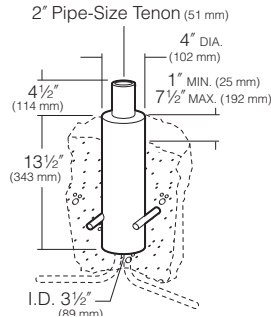
**Surface Mount Tenon
SMT/BL**

2" pipe-size tenon (2-3/8" O.D., 2" I.D.).
Welded to a cast aluminum plate. Plate has four 1/2" mounting holes, and tenon has one 1/2" NPT for side conduit entry. Black finish.



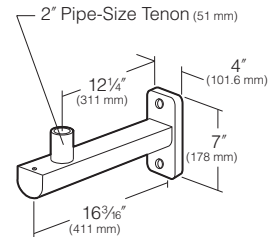
**Stanchion Mount Tenon
SM2/BL**

2" tenon. 4" O.D. cast low copper (<0.6% Cu) aluminum stanchion with 2" pipe-size tenon (2-3/8" O.D., 1-3/8" I.D.) for mounting a single fixture or multiple top-mounts. Black finish.



**Wall Mount Tenon
WM2/BL, WM2/DB, WM2/LG, WM2/SG,
WM2/PS, WM2/WH**

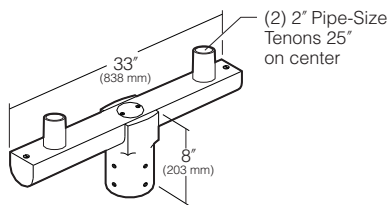
2" pipe-size tenon (2-3/8" O.D., 2" I.D.).
Welded to an extruded aluminum arm with a removable end cap for wiring access. Arm is welded to a cast aluminum plate with two 1/2" mounting holes.



**Twin Mount Tenon
MTM-2B/BL, MTM-2B/DB, MTM-2B/LG,
MTM-2B/SG, MTM-2B/PS, MTM-2B/WH**

Extruded aluminum support continuously welded to a heavy cast aluminum slipfitter hub which cradles the arm for strength. The slipfitter hub contains four recessed 3/8" stainless steel allen head set point screws for mounting to steel pole with steel 2" pipe size tenon (2-3/8" O.D. x 4-1/4"). Cast aluminum end caps and center cap provide access to field splice connections.

CAUTION: Approved for mounting to poles with steel tenons only.



**Triple Mount Tenon
MTM-3E/BL, MTM-3E/DB, MTM-3E/LG,
MTM-3E/SG, MTM-3E/PS, MTM-3E/WH**

Extruded aluminum support continuously welded to a heavy cast aluminum slipfitter hub which cradles the arm for strength. The slipfitter hub contains four recessed 3/8" stainless steel allen head set point screws for mounting to steel pole with steel 2" pipe size tenon (2-3/8" O.D. x 4-1/4"). Cast aluminum end caps and center cap provide access to field splice connections.

CAUTION: Approved for mounting to poles with steel tenons only.

