

SAE 201

ADJUSTABLE LED COVE

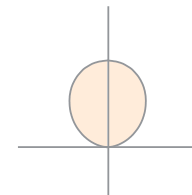
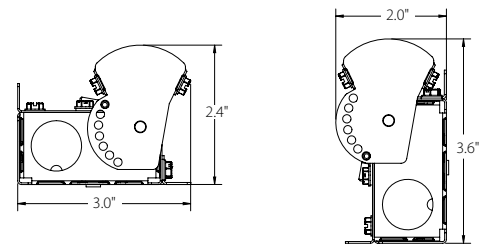
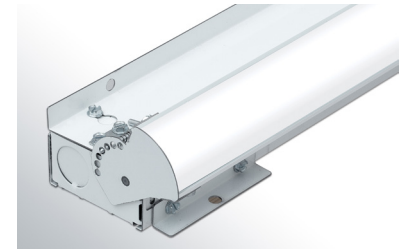
Fixture Type: _____

Project Name: _____



Ordering Guide

Feature	Code	Options	Description
Program		SAE	SAE Program
Series		201	201 Adjustable LED Cove
Mounting		CC	Concealed Cove
Fixture Distribution		AI	Asymmetric Indirect
Row Length (in feet)		—'	Enter in foot increments Note fixture lengths below.
Max Length in row		01	1', 305mm
		02	2', 610mm
		03	3', 914mm
		04	4', 1219mm
Finish/Color		C1	Matte White
Color Temperature		27K	2700K
		30K	3000K
		35K	3500K
		40K	4000K
		50K	5000K+
		27K9	2700K, 90 CRI
		30K9	3000K, 90 CRI
		35K9	3500K, 90 CRI
		40K9	4000K, 90 CRI
		50K9	5000K, 90 CRI+
		2230TD	2200K-3000K SpectraSync™ Dim to Warm*
		2750T	2700K-5000K SpectraSync™ Tunable White*
		2765T	2700K-6500K SpectraSync™ Tunable White* *Must be ordered with D05 Driver option.
Diffuser		SGL	Soft Glow Lens
Output/ft (specified in 50 lumens/ft increments)		I050	500(not available in 1' individual)
		I170	1700



Key Features:

- Variable Intensity Technology for specifiable output/wattage
- SpectraSync™ Color Tuning Technology
- 90° adjustable range with 7 positions at 15° increments
- Adjustable after install
- Can be installed with flexible conduit for curved applications

Performance

Nomenclature	Lumens/ft	W/ft	Efficacy
I090	900	7.3	122
I100	1000	8.1	124
I110	1100	8.9	124
I120	1200	9.6	125
I130	1300	10.6	122
I140	1400	11.5	121
I150	1500	12.8	118

* Additional lead time may be applicable. Contact factory.



Ordering Guide (continued)

Driver	NDM	Non Dimming	
	D05	5% Dimming, 0-10V*	
	D01	1% Dimming, 0-10V	
	DS1	Soft-Start 1% Dimming, 0-10V	
	D00	Dim-to-off (1%), 0-10V	
	DS0	Soft-Start Dim-to-off (1%), 0-10V	
	LEC	Hi-lume 1% EcoSystem LED driver option**	
	LTW	Lutron Hi-Lume 1% 2-wire***	
	DALI	DALI+	
	DALIP	Powered DALI (2.0)+ *Must be ordered with 2230TD, 2750T or 2765T option **Not applicable on 1' ***120V only; not applicable on 1'	
Circuiting	1C	1 Circuit	
Voltage	UNV	Universal Voltage (120V through 277V)	
	347	347 Volt*+ *Excludes Emergency Battery Pack 'EF' Option. Excludes LEC, LTW, DALI, and DALIP Dimming Drivers	
Thru-wiring	W1	No Thru Wire	
	W2	Provide Normal and Emergency Thru Wiring*	
	W3	Provide Normal Thru Wiring Only *Only applicable when specified with emergency	
Optional Features	Code	Options	Description
Nightlight	NL		Nightlight Circuit Required. Enter quantity. 2NL= 2 nightlight circuits/row *Nightlight not available on 1'
Corner Wiring Kit	WKC6		6" Corner Wiring Kit
	WKC24		24" Corner Wiring Kit

+ Additional lead time may be applicable. Contact factory.

Output Restrictions

Driver options listed below are not available for the output and length as shown

Restrictions-Indirect	Output					
	500	550	600	650	700	
Length (feet)	1	Not Available	Not Available	Not Available	Not Available	Not Available

SAE 201

ADJUSTABLE LED COVE

Details

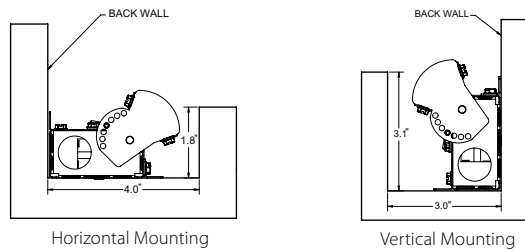
Construction:

Housing- Pre-paint White Steel Housing Construction
End caps- LED Module End Caps construction of Pre-paint White Steel and allow for 90° adjustability
Lens- 30° diffuse film

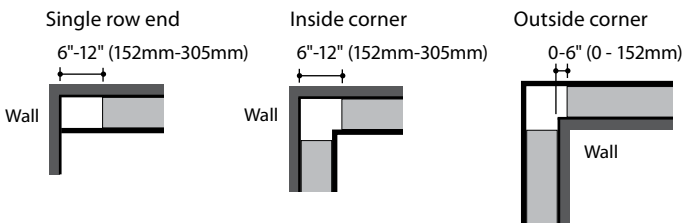
Mounting:

Install in cove (provided by others). For maximum efficiency, wall and ceiling above cove should have matte surfaces with high reflectances.

Below are the suggested minimum cove dimensions illustrating SAE201 installed at a peak angle of 45°. Actual cove dimensions and product placement will vary contingent upon site conditions and performance requirements.



Recommended fixture positioning: Positioning at Ends and Corners



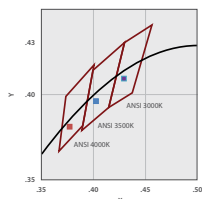
Fixture Lengths:

- 01 (1', 305mm)
- 02 (2', 611mm)
- 03 (3', 914mm)
- 04 (4', 1219mm)

Color Temperature:

- 27K-2700K output multiplier (0.95)
- 30K-3000K output multiplier (0.98)
- 35K-3500K output multiplier (1.00)*
- 40K-4000K output multiplier (1.03)
- 50K-5000K output multiplier (1.05)
- 27K9-2700K 90 CRI output multiplier (0.83)
- 30K9-3000K 90 CRI output multiplier (0.85)
- 35K9-3500K 90 CRI output multiplier (0.88)
- 40K9-4000K 90 CRI output multiplier (0.90)
- 50K9-5000K 90 CRI output multiplier (0.93)

*Scale all values from 35K



DATE:	LOCATION:
TYPE:	PROJECT:
CATALOG #:	

Color Variation:

2 step MacAdam ellipse

Output (VI technology):

Variable Intensity (VI) technology allows precise specification of fixture output/wattage. Fixture will be programmed and labeled to specification.

Output:

Specify in 50 lumen increments within the below range:

	Lumens/ft	Nomenclature
Min:	500	I050
Max:	1700	I070

Circuiting:

1C (1 Circuit) Fixture wired for a single circuit.

Driver:

- NDM: Non-dimming. Fixture will be wired for fixed light output.
- D05: Osram 100%-5% dimming range. Fixture will be wired for low voltage 0-10V dimming control. Only applicable if either 2230TD, 2750T or 2765T is selected.
- D01: 100%-1% dimming range. Fixture will be wired for low voltage 0-10V dimming control.
- DS1: Soft-Start 100%-1% dimming range. Fixture will be wired for low voltage 0-10V dimming control.
- D00: Dim-to-off 100%-1% Dimming range. Fixture will be wired for low voltage 0-10V dimming control.
- DS0: Soft-Start Dim-to-off 100%-1% dimming range. Fixture will be wired for low voltage 0-10V dimming control.
- LEC: Hi-Lume 1% EcoSystem LED Driver with Soft-on, Fade-to-Black dimming technology
- LTW: 100%-1% dimming range. Lutron 2-wire 120V forward phase control dimmer compatible using Hi-lume 1% 2-wire (LTE series) LED driver. *
- DALI: DALI Compatible.
- DALIP: Self-Powered DALI bus (e.g. SR, DEXAL)

*See driver limitations in Output Restrictions above.

Row Joining:

If installing into a straight run, install neighboring fixtures with joiner strap connecting them, screwing both down into the cove.

Corner Wiring Kit:

6" or 24" flexible whip assembly available that can be cut to length in the field.

SpectraSync™ Color Tuning Technology: SpectraSync™

Control your space based on the needs of the application, specific activities throughout the day and preferences of the occupants with two distinct SpectraSync™ Color Tuning Technology.

- Dim to Warm: Dim to Warm mimics the familiar warming effect that occurs with traditional incandescent sources as they are dimmed. (Available with 2200K-3000K).
- Tunable White: Tunable White offers users the ability to tailor CCT to their personal preference, enhancing task visibility, material and colors or the aesthetics of the space. (Available with 2700K-5000K or 2700K-6500K).

See separate SpectraSync™ Tech Sheet for additional details.

See separate NX Lighting Controls Guide for additional details.

SAE 201

ADJUSTABLE LED COVE

Details (cont)

Nightlight:

See separate LC-Nightlight spec sheet for additional details.

Fixture Weight:

2 lbs./ft.

Ratings:

CSA listed for damp locations.

This product qualifies as a "designated country construction material" per FAR 52.225-11 Buy American-Construction.

Materials under Trade Agreements effective 8/14/2020.



Warranty:

LED boards- 5 years

LED drivers (standard)- 5 years

LED drivers (Lutron)- 3 years

DATE: _____ LOCATION: _____

TYPE: _____ PROJECT: _____

CATALOG #: _____

Recommended Fixture Positioning:

Mount horizontally as far away from room side as cove will allow.

Set adjustment angle to desired result on surrounding walls and ceilings.

Field accessibility:

If mounted horizontally, driver is accessible without removal of fixture.

If fixture is mounted vertically and joiner strap is installed, fixture(s) must be removed to service.

Rated Life:

Test in accordance to the LM79-2008 and derived from EPA TM-21 calculator L70: 257,000 (calculated per TM-21 extrapolated curve)

L70: >61,000 (reported per TM-21/LM80 6x's limitation)

L90: 66,000 (calculated per TM-21 extrapolated curve)

L90: >61,000 (reported per TM-21/LM80 6x's limitation)

SAE 201

ADJUSTABLE LED COVE

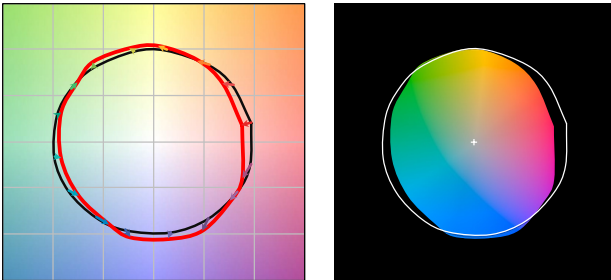
Details (continued)

Color Characteristics:

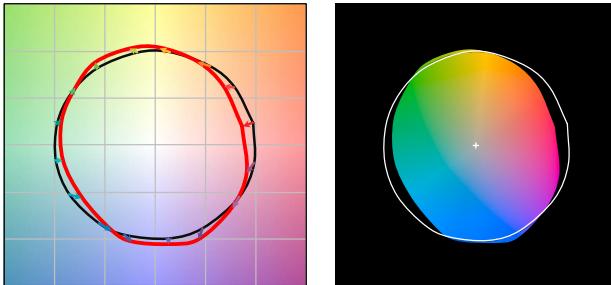
Value	Ordering Code		
	30K	35K	40K
Rf	82	81	82
Rg	98	98	95
CCT (K)	3014	3500	3985
Duv	-0.0014	-0.0008	-0.0009
x	0.4340	0.4045	0.3805
y	0.3996	0.3886	0.3748
CIE Ra	83	82	84

Color Vector Graphic:

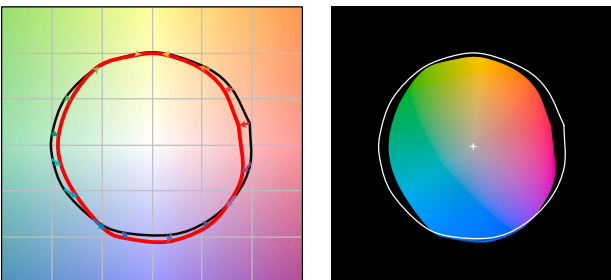
30K:



35K:

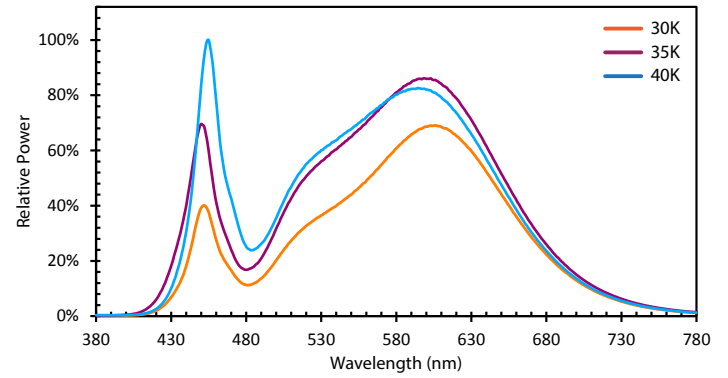


40K:

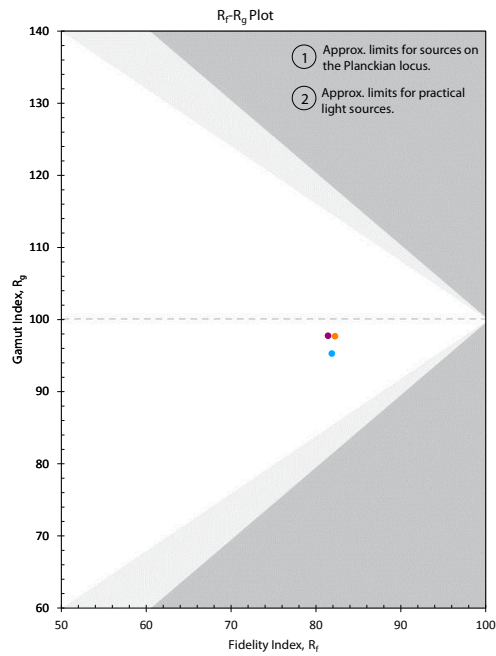


DATE: _____ LOCATION: _____
 TYPE: _____ PROJECT: _____
 CATALOG #: _____

Spectral Distribution:



Color Gamut/Fidelity Plot



CRI:

80 minimum

CCT	CRI	R1	R2	R3	R4	R5	R6	R7	R8	R9	R10	R11	R12	R13	R14
30K	83	82	90	96	81	81	87	84	63	15	77	80	69	84	98
35K	84	83	92	96	81	82	88	85	64	17	79	80	66	85	98
40K	84	83	91	95	82	82	86	87	68	20	76	80	60	85	97

SAE 201

ADJUSTABLE LED COVE

Photometry

Fixture: SAE201-CC-I150-0202-C1-35K-I150-D01-1C-UNV-W1

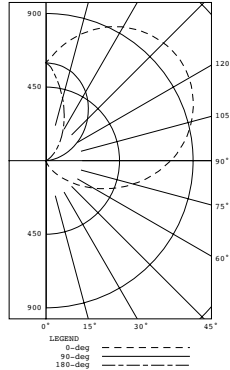
CCT: 3500K

Output: I150

Nominal lumens: 1500 lumens

Efficacy: 119 lm/W

Test report: 17.00565



Zonal Lumen Summary

Zone	Lumens	Lamp%
0-40	17	0.60%
0-60	104	3.50%
0-90	557	18.70%
90-180	2428	81.30%
0-180	2986	100.0%