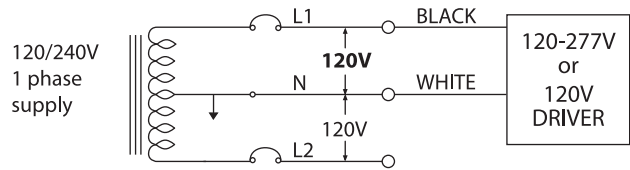
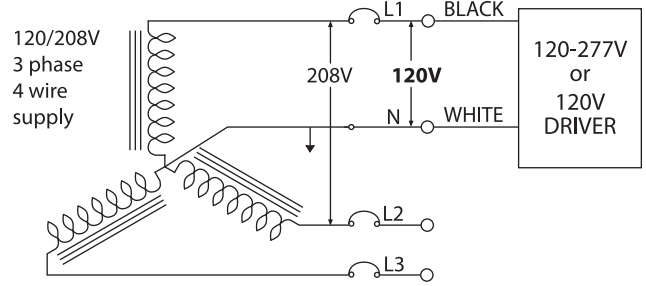


120 VOLT CONNECTIONS

Line-to-neutral supply; ballast; to the ground neutral

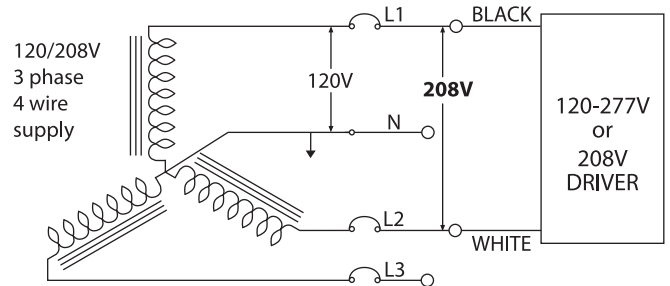


Line-to-neutral supply; connected



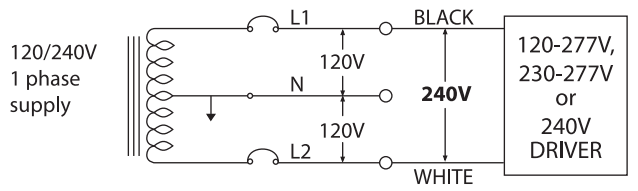
208 VOLT CONNECTIONS

Line-to-line supply

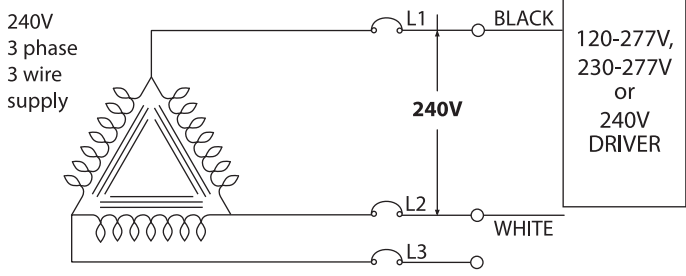


240 VOLT CONNECTIONS

Line-to-line supply

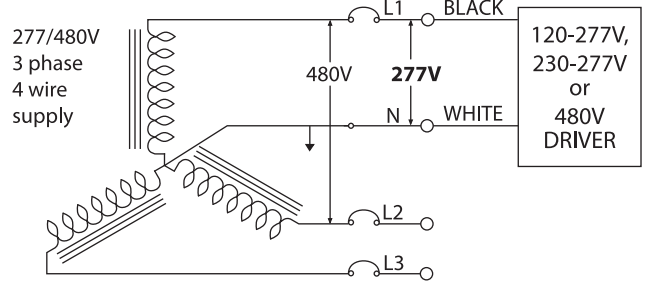


Line-to-line supply



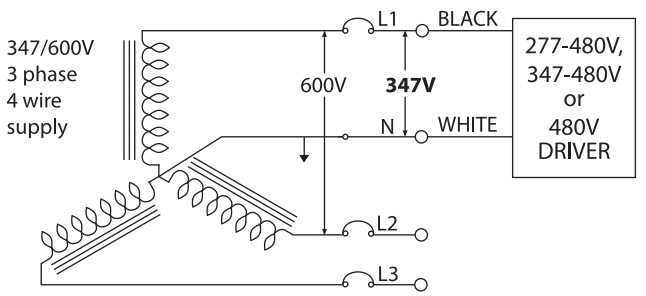
277 VOLT CONNECTIONS

Line-to-neutral supply; connected



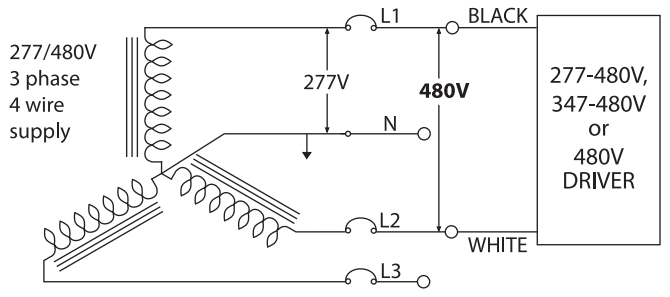
347 VOLT CONNECTIONS

Line-to-neutral supply; connected

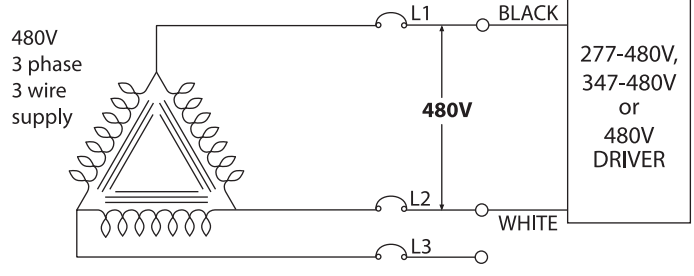


480 VOLT CONNECTIONS

Line-to-line supply



Line-to-line supply



WARNING: SUPPLY LINE VOLTAGE MUST BE WITHIN DRIVER VOLTAGE RANGE FOR COMPATIBILITY

